



L&M Heating Supplies Ltd

Radiators & Towel Rails

Radiator Valves

Water Heaters

Boilers

Cylinders

Foam Lagging

Price Guide

September 2021



CROWN
RADIATORS

The art of heating redefined.

For the full range of designer radiators,
please refer to our Crown Catalogue or visit

www.crownradiators.com



Northampton

Unit 2, Sanders Lodge Industrial Estate, Wellingborough Road, Rushden, Northamptonshire NN10 6BQ

t. 01933 352910

f. 01933 352915

e. nhsales@lmheating.com

Enfield

103 Lockfield Avenue, Enfield, Middlesex EN3 7PY

t. 020 8443 5111

f. 020 8443 5588

e. sales@lmheating.com

www.lmheating.com

We are an independent distributor

For any questions you may have or for more information on our products, please contact our sales team:

Regional Sales Managers

- Central and Northern England, East Anglia and Scotland
Pat Casley, pat@lmheating.com, t. 07730 529789
- Wales and Southern England
Steve Rugman, steve@lmheating.com, t. 07711 008928

We operate a strict returns policy, see page 43.

We offer a next day delivery service on the majority of our products provided orders are placed before 3.30pm.

All prices in this Price Guide are subject to VAT.

Prices are correct at time of going to press and may be subject to alteration. Errors and omissions excepted.

Contents

Radiators & Towel Rails

Eco Rads	4
Eco Flat - Horizontal	6
Eco Flat - Vertical	7
Eco Towel Rails	8
Eco Premium Towel Rails	9
Eco LST	10
Super LST	12
Heritage	13
Renaissance	14
Jubilee	15
Classic Multi Column - Horizontal	16
Classic Multi Column - Vertical	17
Eco Retro	18
Bedford	19
Baker	20
Cavendish	21
Vertex	22
Renhold	23
Oxford	24
Duke	24
Bond	25
Belgrave	25
Charlotte	26
Merrion	26
Carnaby	27
Canonbury	27
Petticoat	28
Downing	28
Hanover	28

Radiator Valves & Extensions 29-30

Water Heaters

Ariston - Electric & Gas	31
--------------------------	----

Boilers

Intergas Rapid Boilers	32
Intergas Eco And HRE Boilers	33
Grant Oil Boilers	34
Grant Boiler Accessories	35-36
Keston Boilers	37

Cylinders

Joule Stainless Steel Unvented	38
Telford Stainless Steel Unvented	39
Telford Copper Cylinders	40

Various

Climaflex Pipe Insulation	40
Radiator Shaping Service	43
Re-handling Charges	43

Eco Rads

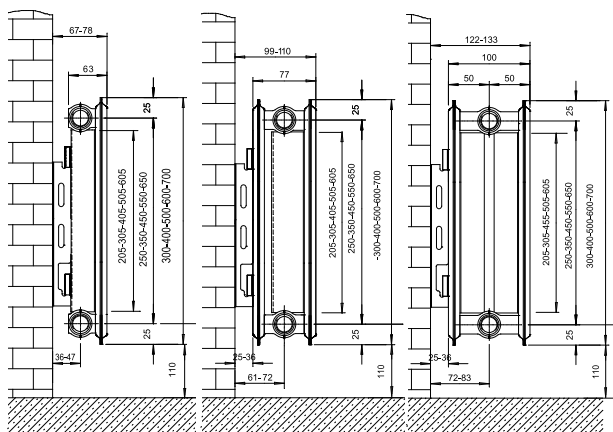
Compact Radiators

10
YEAR
GUARANTEE


Water treatment

It is strongly recommended on completion of the installation the system should be properly flushed and filled in accordance with the British Standard Code of Practice for the Treatment of Water in Domestic Hot Water Central Heating Systems BS7593

For maximum efficiency, radiators should be fixed at not less than 100mm from finished floor level. Pipe positioning guide for manual valve allow 35mm to centre pipe. For TRV allow 45mm to centre pipe. To prevent damage to radiator it is strongly recommended during installation to leave protective packaging on radiator by simply removing the lug protectors and pre-cut tapping connection



Notes

- All outputs at Delta T50°C
- Heat outputs certified to EN442
- All Eco Rads are supplied with factory fitted top grille and side panels
- Eco Rads are manufactured under EN ISO 9001
- Eco Rads are painted with RAL 9016
- All dimensions in millimetres
- All prices subject to VAT
- A restocking charge applies (see page 43)

Singles Type 11

Code	Height	Width	Watts	BTUs	Price (£)
TS305	300	500	280	955	124.98
TS310	300	1000	560	1911	199.05
TS312	300	1200	672	2293	249.91
TS314	300	1400	784	2675	278.91
TS320	300	2000	1120	3822	390.95
TS404	400	400	294	1003	118.05
TS406	400	600	442	1508	133.88
TS408	400	800	589	2010	152.69
TS410	400	1000	736	2511	189.2
TS412	400	1200	883	3013	227.03
TS414	400	1400	1030	3515	264.83
TS416	400	1600	1177	4016	302.7
TS418	400	1800	1325	4521	340.52
TS420	400	2000	1472	5023	378.34
TS422	400	2200	1619	5524	474.61
TS424	400	2400	1766	6026	517.79
TS426	400	2600	1913	6527	559.92
TS428	400	2800	2060	7029	604.09
TS430	400	3000	2208	7534	647.25
TS504	500	400	360	1228	126.91
TS505	500	500	450	1535	144.26
TS506	500	600	540	1843	161.65
TS507	500	700	630	2150	169.96
TS508	500	800	720	2457	193.24
TS509	500	900	810	2764	218.93
TS510	500	1000	900	3071	239.95
TS511	500	1100	990	3378	265.48
TS512	500	1200	1080	3685	287.94
TS513	500	1300	1170	3992	320.97
TS514	500	1400	1260	4299	335.95
TS516	500	1600	1440	4913	383.92
TS518	500	1800	1620	5528	431.9
TS520	500	2000	1800	6142	479.9
TS524	500	2400	2160	7370	575.88
TS526	500	2600	2340	7984	623.85
TS528	500	2800	2520	8599	671.85
TS530	500	3000	2700	9213	719.81
TS604	600	400	421	1437	158.76
TS605	600	500	526	1795	
TS606	600	600	631	2153	168.03
TS607	600	700	737	2515	183.67
TS608	600	800	842	2873	208.82
TS609	600	900	947	3231	234.02
TS610	600	1000	1052	3590	258.93
TS611	600	1100	1157	3948	283.48
TS612	600	1200	1263	4310	310.67
TS613	600	1300	1368	4668	349.34
TS614	600	1400	1473	5026	362.45
TS615	600	1500	1578	5384	402.38
TS616	600	1600	1683	5743	414.23
TS618	600	1800	1894	6463	466
TS620	600	2000	2104	7179	522.78
TS622	600	2200	2315	7899	614.86
TS624	600	2400	2525	8616	670.79
TS626	600	2600	2736	9336	726.66
TS628	600	2800	2946	10052	782.59
TS630	600	3000	3157	10772	838.48
TS704	700	400	477	1628	166.63
TS705	700	500	596	2034	185.13
TS706	700	600	715	2440	196.93
TS707	700	700	834	2846	228.51
TS708	700	800	953	3252	259.92
TS709	700	900	1072	3658	291.18
TS710	700	1000	1191	4064	322.13
TS711	700	1100	1310	4470	380.92
TS712	700	1200	1430	4879	415.55
TS714	700	1400	1668	5691	484.81

P+ Type 21

Code	Height	Width	Watts	BTUs	Price (£)
TP406	400	600	637	2174	185.91
TP408	400	800	850	2900	247.88
TP410	400	1000	1062	3624	309.80
TP412	400	1200	1274	4347	371.80
TP414	400	1400	1487	5074	433.75
TP504	500	400	511	1744	205.98
TP506	500	600	766	2614	241.85
TP507	500	700	894	3050	281.75
TP508	500	800	1022	3487	321.23
TP509	500	900	1149	3921	360.75
TP510	500	1000	1277	4357	400.56
TP511	500	1100	1405	4794	440.21
TP512	500	1200	1533	5231	480.82
TP513	500	1300	1660	5664	549.82
TP514	500	1400	1788	6101	561.30
TP516	500	1600	2043	6971	641.08
TP604	600	400	592	2020	201.34
TP605	600	500	740	2525	233.73
TP606	600	600	888	3030	246.12
TP607	600	700	1036	3535	287.03
TP608	600	800	1184	4040	327.31
TP609	600	900	1332	4545	367.54
TP610	600	1000	1480	5050	408.68
TP611	600	1100	1628	5555	448.80
TP612	600	1200	1777	6063	490.11
TP613	600	1300	1925	6568	550.74
TP614	600	1400	2073	7073	571.83
TP615	600	1500	2221	7578	630.83
TP616	600	1600	2369	8083	653.03
TP618	600	1800	2665	9093	735.57
TP620	600	2000	2961	10103	817.29
TP704	700	400	669	2283	264.92
TP706	700	600	1004	3426	313.10
TP708	700	800	1338	4565	413.23
TP710	700	1000	1673	5709	512.20
TP712	700	1200	2007	6848	660.71

Doubles Type 22

Code	Height	Width	Watts	BTUs	Price (£)
TD305	300	500	534	1822	203.19
TD310	300	1000	1068	3644	349.82
TD312	300	1200	1282	4374	435.05
TD314	300	1400	1496	5105	489.78
TD320	300	2000	2137	7292	701.23
TD404	400	400	547	1866	179.59
TD406	400	600	821	2801	246.36
TD408	400	800	1095	3736	285.08
TD410	400	1000	1368	4668	356.13
TD412	400	1200	1642	5603	427.37
TD414	400	1400	1916	6538	498.59
TD416	400	1600	2190	7473	569.76
TD418	400	1800	2463	8404	641.00
TD420	400	2000	2737	9339	712.20
TD422	400	2200	3011	10274	1,113.25
TD424	400	2400	3284	11205	1,214.45
TD504	500	400	658	2245	228.46
TD505	500	500	822	2805	253.67
TD506	500	600	987	3368	278.91
TD507	500	700	1151	3927	325.16
TD508	500	800	1316	4490	370.79
TD509	500	900	1480	5050	416.98
TD510	500	1000	1645	5613	463.20
TD511	500	1100	1809	6173	509.16
TD512	500	1200	1973	6732	555.75
TD513	500	1300	2138	7295	624.31
TD514	500	1400	2302	7855	648.39
TD516	500	1600	2631	8977	741.02
TD518	500	1800	2960	10100	833.64
TD520	500	2000	3289	11223	926.26
TD524	500	2400	3947	13468	1,579.44
TD604	600	400	760	2593	240.03
TD605	600	500	949	3238	274.73
TD606	600	600	1139	3886	297.91
TD607	600	700	1329	4535	347.60
TD608	600	800	1519	5183	396.79
TD609	600	900	1709	5831	445.92
TD610	600	1000	1899	6480	495.37
TD611	600	1100	2089	7128	544.67
TD612	600	1200	2279	7776	594.43
TD613	600	1300	2469	8425	682.45
TD614	600	1400	2658	9069	693.55
TD615	600	1500	2848	9718	775.62
TD616	600	1600	3038	10366	800.27
TD618	600	1800	3418	11663	900.27
TD620	600	2000	3798	12959	1,000.33
TD624	600	2400	4557	15549	1,722.49
TD704	700	400	853	2911	297.77
TD705	700	500	1067	3641	339.48
TD706	700	600	1280	4368	361.21
TD707	700	700	1494	5098	420.95
TD708	700	800	1707	5825	480.52
TD709	700	900	1920	6551	540.36
TD710	700	1000	2134	7282	600.14
TD711	700	1100	2347	8008	709.65
TD712	700	1200	2560	8735	774.15
TD714	700	1400	2987	10192	903.17



ECO FLAT

10
YEAR
GUARANTEE

Horizontal

Singles Type 11

Code	Height	Width	Watts	BTUs	Price (£)
SM305	300	500	235	803	271.45
SM310	300	1000	469	1604	398.82
SM314	300	1400	656	2240	503.50
SM320	300	2000	937	3207	626.97
SM404	400	400	242	827	271.03
SM406	400	600	363	1240	315.56
SM408	400	800	484	1654	373.69
SM410	400	1000	606	2068	432.39
SM412	400	1200	727	2481	501.62
SM414	400	1400	848	2895	555.28
SM416	400	1600	969	3309	617.93
SM418	400	1800	1090	3722	654.27
SM420	400	2000	1211	4135	703.59
SM504	500	400	294	1006	297.83
SM506	500	600	442	1508	350.88
SM508	500	800	589	2011	421.20
SM510	500	1000	736	2513	492.96
SM512	500	1200	883	3017	576.43
SM514	500	1400	1030	3519	640.36
SM516	500	1600	1178	4022	701.82
SM518	500	1800	1325	4524	761.96
SM520	500	2000	1472	5028	822.90
SM604	600	400	345	1178	318.38
SM606	600	600	517	1766	381.26
SM608	600	800	690	2355	463.39
SM610	600	1000	862	2944	545.73
SM612	600	1200	1035	3534	613.62
SM614	600	1400	1207	4122	714.38
SM616	600	1600	1379	4711	786.54
SM618	600	1800	1552	5299	815.19
SM620	600	2000	1724	5889	882.43

P+ Type 21

Code	Height	Width	Watts	BTUs	Price (£)
PM606	600	600	771	2633	468.33
PM608	600	800	1028	3511	586.65
PM610	600	1000	1285	4388	707.53
PM612	600	1200	1542	5266	824.96
PM614	600	1400	1799	6144	951.63

Doubles Type 22

Code	Height	Width	Watts	BTUs	Price (£)
DM305	300	500	450	1536	354.00
DM310	300	1000	899	3072	560.42
DM314	300	1400	1259	4301	737.09
DM320	300	2000	1799	6145	966.79
DM404	400	400	461	1575	350.16
DM406	400	600	691	2362	425.59
DM408	400	800	922	3149	520.54
DM410	400	1000	1152	3936	615.75
DM412	400	1200	1382	4724	722.29
DM414	400	1400	1613	5511	812.16
DM416	400	1600	1844	6298	911.63
DM418	400	1800	2075	7085	984.84
DM420	400	2000	2305	7872	1,051.37
DM504	500	400	556	1899	395.33
DM506	500	600	835	2850	486.81
DM508	500	800	1112	3800	603.00
DM510	500	1000	1391	4751	720.00
DM512	500	1200	1669	5699	848.30
DM514	500	1400	1947	6649	957.55
DM516	500	1600	2226	7607	1,065.26
DM518	500	1800	2503	8550	1,170.16
DM520	500	2000	2782	9504	1,275.94
DM604	600	400	647	2207	436.73
DM606	600	600	969	3311	545.82
DM608	600	800	1292	4414	683.83
DM610	600	1000	1616	5517	821.09
DM612	600	1200	1939	6621	970.39
DM614	600	1400	2262	7725	1,099.89
DM616	600	1600	2585	8828	1,227.25
DM618	600	1800	2908	9931	1,351.88
DM620	600	2000	3231	11034	1,477.84

Notes

- All outputs at Delta T50
- Finished in RAL 9016
- All dimensions are in millimetres
- All prices subject to VAT





ECO FLAT

Vertical

Doubles Type 20

Code	Height	Width	Watts	BTUs	Price (£)
DMV318	1800	300	649	2205	734.43
DMV418	1800	400	865	2941	837.03
DMV518	1800	500	1081	3676	944.47
DMV618	1800	600	1297	4412	1,051.96
DMV320	2000	300	730	2482	774.67
DMV420	2000	400	974	3311	888.48
DMV520	2000	500	1217	4138	1,010.38
DMV620	2000	600	1461	4964	1,132.19



Notes

- All outputs at Delta T50°C
- All dimensions in millimetres
- All prices subject to VAT
- A restocking charge applies (see page 43)



ECO TOWEL RAILS

22mm Diameter Horizontal Tubes

5
YEAR
GUARANTEE


Flat White

Code	Width	Height	Watts	BTUs	C/C Tappings	Element	Fuel type	Price (£)
EWf407	400	750	317	1083	355	150	C/E/D	51.75
EWf410	400	1000	409	1395	355	300	C/E/D	73.11
EWf412	400	1200	490	1671	355	400	C/E/D	79.13
EWf507	500	750	396	1351	455	300	C/E/D	48.71
EWf510	500	1000	512	1746	455	400	C/E/D	79.76
EWf512	500	1200	613	2090	455	400	C/E/D	85.29
EWf515	500	1500	771	2631	455	600	C/E/D	109.58
EWf518	500	1800	937	3196	455	600	C/E/D	140.02
EWf607	600	750	476	1624	555	400	C/E/D	54.8
EWf610	600	1000	613	2090	555	400	C/E/D	83.75
EWf612	600	1200	736	2513	555	600	C/E/D	88.28
EWf615	600	1500	925	3157	555	600	C/E/D	115.67
EWf618	600	1800	1124	3836	555	600	C/E/D	144.31

Flat Chrome

Code	Width	Height	Watts	BTUs	C/C Tappings	Element	Fuel type	Price (£)
ECF307	300	750	183	624	255	150	C/E/D	99.09
ECF312	300	1200	283	964	255	150	C/E/D	134.14
ECF407	400	750	244	834	355	150	C/E/D	99.62
ECF410	400	1000	315	1074	355	150	C/E/D	123.26
ECF412	400	1200	377	1287	355	300	C/E/D	135.60
ECF415	400	1500	456	1557	355	300	C/E/D	204.77
ECF507	500	750	305	1040	455	150	C/E/D	96.85
ECF510	500	1000	394	1345	455	300	C/E/D	127.29
ECF512	500	1200	472	1609	455	400	C/E/D	138.36
ECF515	500	1500	594	2026	455	400	C/E/D	207.54
ECF518	500	1800	721	2461	455	600	C/E/D	235.20
ECF607	600	750	366	1250	555	300	C/E/D	96.85
ECF610	600	1000	472	1609	555	400	C/E/D	130.06
ECF612	600	1200	567	1935	555	400	C/E/D	143.90
ECF615	600	1500	712	2431	555	600	C/E/D	213.06
ECF618	600	1800	866	2954	555	600	C/E/D	246.27

Curved Chrome

Code	Width	Height	Watts	BTUs	C/C Tappings	Element	Fuel type	Price (£)
ECC407	400	750	244	834	355	150	C/E/D	105.16
ECC412	400	1200	377	1287	355	300	C/E/D	141.13
ECC507	500	750	305	1040	455	150	C/E/D	102.39
ECC510	500	1000	394	1345	455	300	C/E/D	128.10
ECC512	500	1200	472	1609	455	400	C/E/D	143.90
ECC515	500	1500	594	2026	455	400	C/E/D	213.06
ECC518	500	1800	721	2461	455	600	C/E/D	246.27
ECC607	600	750	366	1250	555	300	C/E/D	105.16
ECC610	600	1000	472	1609	555	400	C/E/D	142.60
ECC612	600	1200	567	1935	555	400	C/E/D	149.42
ECC615	600	1500	712	2431	555	600	C/E/D	221.37
ECC618	600	1800	866	2954	555	600	C/E/D	251.81

Notes

- All outputs at Delta T50
- Centre to wall - 75mm
- All dimensions are in millimetres
- All prices subject to VAT



ECO PREMIUM TOWEL RAILS

25mm Diameter Horizontal Tubes

Flat Chrome

Code	Width	Height	Watts	BTUs	C/C Tappings	Element	Fuel type	Price (£)
PCF508	500	800	346	1181	455	300	C/E/D	123.26
PCF510	500	1000	447	1525	455	300	C/E/D	136.35
PCF512	500	1200	535	1825	455	400	C/E/D	149.22
PCF515	500	1500	674	2300	455	600	C/E/D	222.07
PCF608	600	800	416	1419	555	300	C/E/D	127.24
PCF610	600	1000	536	1829	555	400	C/E/D	140.22
PCF612	600	1200	645	2201	555	600	C/E/D	153.20
PCF615	600	1500	810	2764	555	600	C/E/D	227.57

Standard Electric Elements

Code	Product†	Price (£)
150U	150W Unswitched	64.00
300U	300W Unswitched	68.00
400U	400W Unswitched	70.00
600U	600W Unswitched	75.00

Thermostatic Electric Elements

Code	Product†	Price (£)
MAG250C	Magic 250W Unswitched	160.00
MAG400C	Magic 400W Unswitched	168.00

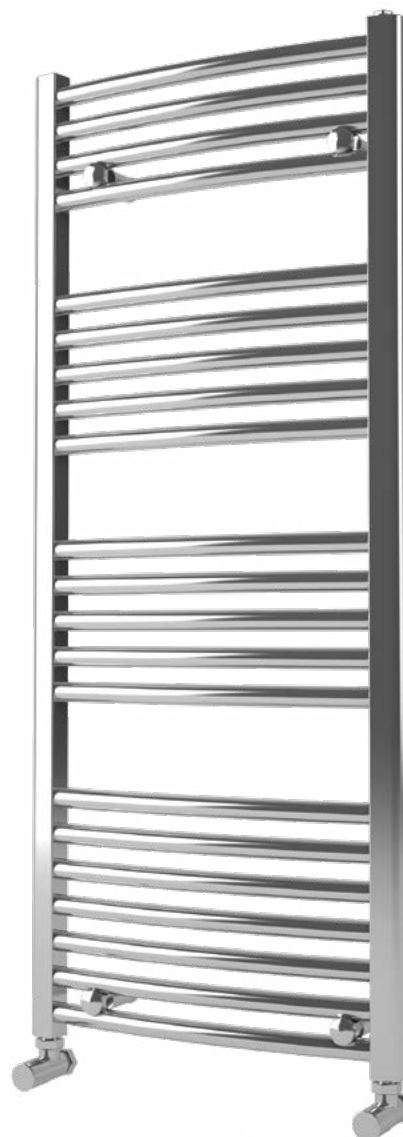
† complete with "Tee Piece"

Electric conversion Oil

Code	Product	Price (£)
GC	Oil for heating only radiators - 1 litre	37.00

Pre filled for electric use only

Code	Product	Price (£)
PFS	Pre fill surcharge for electric use only	97.00



Electric only: Select the radiator + select the heating element from above + pre fill surcharge.



Notes

- All outputs at Delta T50
- Centre to wall - 75mm
- All dimensions are in millimetres
- All prices subject to VAT

ECO LST

LST Cover with Heating Element Included

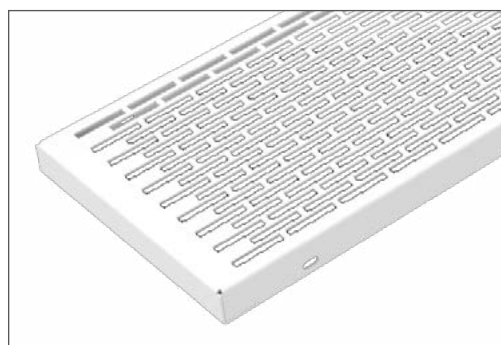
5
YEAR
GUARANTEE

DEPTH 82

Height Length	200			300			400			500			600		
	Code	BTUs	Price (£)	Code	BTUs	Price (£)	Code	BTUs	Price (£)	Code	BTUs	Price (£)	Code	BTUs	Price (£)
400	LST204-082	297	332.00	LST304-082	358	336.00	LST404-082	427	349.00	LST504-082	474	360.00	LST604-082	512	368.00
500	LST205-082	444	349.00	LST305-082	539	389.00	LST405-082	641	369.00	LST505-082	710	381.00	LST605-082	768	389.00
600	LST206-082	594	363.00	LST306-082	717	412.00	LST406-082	856	389.00	LST506-082	945	403.00	LST606-082	1024	412.00
700	LST207-082	740	381.00	LST307-082	894	434.00	LST407-082	1068	407.00	LST507-082	1181	426.00	LST607-082	1280	434.00
800	LST208-082	891	398.00	LST308-082	1075	455.00	LST408-082	1283	429.00	LST508-082	1416	447.00	LST608-082	1535	455.00
900	LST209-082	1037	413.00	LST309-082	1252	477.00	LST409-082	1498	449.00	LST509-082	1655	468.00	LST609-082	1791	477.00
1000	LST210-082	1187	429.00	LST310-082	1433	500.00	LST410-082	1709	468.00	LST510-082	1890	490.00	LST610-082	2047	500.00
1100	LST211-082	1334	443.00	LST311-082	1611	523.00	LST411-082	1924	487.00	LST511-082	2126	512.00	LST611-082	2303	523.00
1200	LST212-082	1481	460.00	LST312-082	1791	544.00	LST412-082	2139	509.00	LST512-082	2361	532.00	LST612-082	2559	544.00
1400	LST214-082	1778	495.00	LST314-082	2150	589.00	LST414-082	2566	548.00	LST514-082	2835	575.00	LST614-082	3067	589.00
1600	LST216-082	2075	527.00	LST316-082	2508	634.00	LST416-082	2992	584.00	LST516-082	3306	620.00	LST616-082	3579	634.00
1800	LST218-082	2371	558.00	LST318-082	2866	680.00	LST418-082	3422	627.00	LST518-082	3781	661.00	LST618-082	4091	680.00
2000	LST220-082	2668	593.00	LST320-082	3224	722.00	LST420-082	3849	664.00	LST520-082	4251	707.00	LST620-082	4603	722.00
2200	LST222-082	2965	624.00	LST322-082	3583	768.00	LST422-082	4275	707.00	LST522-082	4726	749.00	LST622-082	5115	768.00
2400	LST224-082	3262	656.00	LST324-082	3941	812.00	LST424-082	4705	745.00	LST524-082	5197	793.00	LST624-082	5627	812.00
2600	LST226-082	3559	691.00	LST326-082	4299	858.00	LST426-082	5132	783.00	LST526-082	5671	835.00	LST626-082	6138	858.00
2800	LST228-082	3852	722.00	LST328-082	4658	902.00	LST428-082	5558	824.00	LST528-082	6142	877.00	LST628-082	6650	902.00

DEPTH 122

Height Length	200			300			400			500			600		
	Code	BTUs	Price (£)	Code	BTUs	Price (£)	Code	BTUs	Price (£)	Code	BTUs	Price (£)	Code	BTUs	Price (£)
400	LST204-122	467	349.00	LST304-122	556	354.00	LST404-122	635	357.00	LST504-122	706	369.00	LST604-122	778	373.00
500	LST205-122	703	368.00	LST305-122	833	372.00	LST405-122	952	377.00	LST505-122	1061	390.00	LST605-122	1167	396.00
600	LST206-122	935	386.00	LST306-122	1112	390.00	LST406-122	1269	396.00	LST506-122	1416	413.00	LST606-122	1556	419.00
700	LST207-122	1170	403.00	LST307-122	1389	411.00	LST407-122	1587	415.00	LST507-122	1767	437.00	LST607-122	1945	442.00
800	LST208-122	1402	421.00	LST308-122	1668	429.00	LST408-122	1904	437.00	LST508-122	2122	459.00	LST608-122	2334	468.00
900	LST209-122	1638	441.00	LST309-122	1945	449.00	LST409-122	2218	455.00	LST509-122	2477	482.00	LST609-122	2723	490.00
1000	LST210-122	1870	459.00	LST310-122	2225	468.00	LST410-122	2535	475.00	LST510-122	2829	503.00	LST610-122	3112	512.00
1100	LST211-122	2105	477.00	LST311-122	2501	486.00	LST411-122	2852	496.00	LST511-122	3183	527.00	LST611-122	3501	536.00
1200	LST212-122	2341	496.00	LST312-122	2781	506.00	LST412-122	3170	513.00	LST512-122	3535	550.00	LST612-122	3890	557.00
1400	LST214-122	2808	532.00	LST314-122	3334	543.00	LST414-122	3804	555.00	LST514-122	4245	594.00	LST614-122	4668	605.00
1600	LST216-122	3276	567.00	LST316-122	3890	581.00	LST416-122	4439	594.00	LST516-122	4951	638.00	LST616-122	5466	653.00
1800	LST218-122	3743	602.00	LST318-122	4446	621.00	LST418-122	5074	633.00	LST518-122	5657	682.00	LST618-122	6223	698.00
2000	LST220-122	4210	640.00	LST320-122	5002	656.00	LST420-122	5705	673.00	LST520-122	6367	729.00	LST620-122	7001	747.00
2200	LST222-122	4678	678.00	LST322-122	5558	696.00	LST422-122	6339	712.00	LST522-122	7073	775.00	LST622-122	7779	794.00
2400	LST224-122	5145	713.00	LST324-122	6114	735.00	LST424-122	6974	752.00	LST524-122	7779	819.00	LST624-122	8557	841.00
2600	LST226-122	5613	752.00	LST326-122	6670	771.00	LST426-122	7609	793.00	LST526-122	8486	863.00	LST626-122	9335	885.00
2800	LST228-122	6080	788.00	LST328-122	7227	810.00	LST428-122	8243	832.00	LST528-122	9195	907.00	LST628-122	10110	933.00



LST Cover with Heating Element Included

DEPTH 182

Height Length	200			300			400			500			600		
	Code	BTUs	Price (£)	Code	BTUs	Price (£)	Code	BTUs	Price (£)	Code	BTUs	Price (£)	Code	BTUs	Price (£)
400	LST204-182	792	363.00	LST304-182	942	369.00	LST404-182	1085	377.00	LST504-182	1225	393.00	LST604-182	1368	398.00
500	LST205-182	1187	389.00	LST305-182	1416	396.00	LST405-182	1628	406.00	LST505-182	1839	421.00	LST605-182	2051	429.00
600	LST206-182	1583	413.00	LST306-182	1887	421.00	LST406-182	2170	433.00	LST506-182	2450	449.00	LST606-182	2733	456.00
700	LST207-182	1979	441.00	LST307-182	2358	449.00	LST407-182	2713	459.00	LST507-182	3064	477.00	LST607-182	3419	486.00
800	LST208-182	2371	466.00	LST308-182	2829	475.00	LST408-182	3255	486.00	LST508-182	3678	506.00	LST608-182	4101	516.00
900	LST209-182	2767	490.00	LST309-182	3299	501.00	LST409-182	3798	512.00	LST509-182	4289	535.00	LST609-182	4784	544.00
1000	LST210-182	3163	516.00	LST310-182	3770	527.00	LST410-182	4340	540.00	LST510-182	4903	563.00	LST610-182	5469	574.00
1100	LST211-182	3559	540.00	LST311-182	4245	553.00	LST411-182	4886	567.00	LST511-182	5514	593.00	LST611-182	6152	602.00
1200	LST212-182	3955	566.00	LST312-182	4715	580.00	LST412-182	5428	594.00	LST512-182	6128	621.00	LST612-182	6834	633.00
1400	LST214-182	4746	615.00	LST314-182	5657	633.00	LST414-182	6514	648.00	LST514-182	7353	678.00	LST614-182	8202	691.00
1600	LST216-182	5538	669.00	LST316-182	6602	684.00	LST416-182	7599	703.00	LST516-182	8578	734.00	LST616-182	9571	748.00
1800	LST218-182	6326	718.00	LST318-182	7544	736.00	LST418-182	8684	755.00	LST518-182	9806	791.00	LST618-182	10935	808.00
2000	LST220-182	7117	768.00	LST320-182	8486	791.00	LST420-182	9769	809.00	LST520-182	11031	846.00	LST620-182	12304	868.00
2200	LST222-182	7909	819.00	LST322-182	9431	843.00	LST422-182	10854	863.00	LST522-182	12256	903.00	LST622-182	13672	924.00
2400	LST224-182	8701	868.00	LST324-182	10372	894.00	LST424-182	11939	917.00	LST524-182	13481	962.00	LST624-182	15037	983.00
2600	LST226-182	9492	919.00	LST326-182	11314	947.00	LST426-182	13024	973.00	LST526-182	14706	1,019.00	LST626-182	16405	1,044.00
2800	LST228-182	10280	969.00	LST328-182	12259	1,000.00	LST428-182	14109	1,025.00	LST528-182	15931	1,074.00	LST628-182	17773	1,102.00

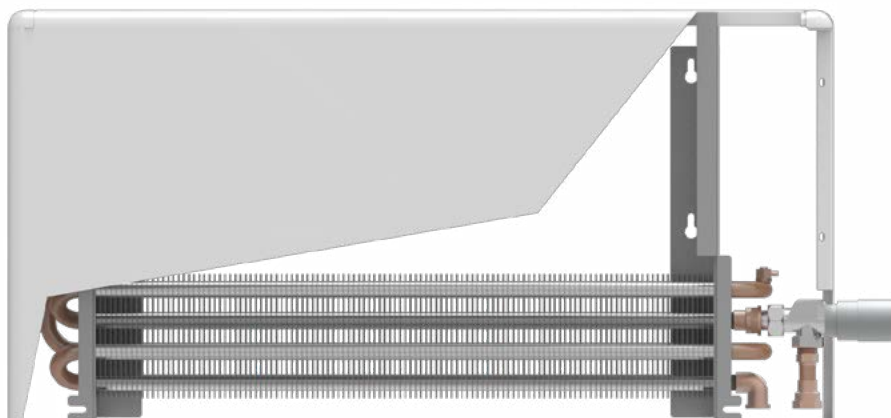
DEPTH 242

Height Length	200			300			400			500			600		
	Code	BTUs	Price (£)	Code	BTUs	Price (£)	Code	BTUs	Price (£)	Code	BTUs	Price (£)	Code	BTUs	Price (£)
400	LST204-242	1136	390.00	LST304-242	1310	396.00	LST404-242	1515	412.00	LST504-242	1747	426.00	LST604-242	2013	430.00
500	LST205-242	1703	419.00	LST305-242	1969	429.00	LST405-242	2272	445.00	LST505-242	2617	458.00	LST605-242	3016	462.00
600	LST206-242	2269	447.00	LST306-242	2624	458.00	LST406-242	3027	472.00	LST506-242	3491	488.00	LST606-242	4023	495.00
700	LST207-242	2835	478.00	LST307-242	3279	488.00	LST407-242	3784	503.00	LST507-242	4364	521.00	LST607-242	5029	527.00
800	LST208-242	3405	509.00	LST308-242	3934	517.00	LST408-242	4542	535.00	LST508-242	5238	552.00	LST608-242	6036	559.00
900	LST209-242	3972	537.00	LST309-242	4593	549.00	LST409-242	5299	567.00	LST509-242	6111	583.00	LST609-242	7043	592.00
1000	LST210-242	4538	567.00	LST310-242	5248	577.00	LST410-242	6056	597.00	LST510-242	6985	615.00	LST610-242	8046	623.00
1100	LST211-242	5105	617.00	LST311-242	5903	609.00	LST411-242	6814	629.00	LST511-242	7855	648.00	LST611-242	9052	656.00
1200	LST212-242	5674	626.00	LST312-242	6558	638.00	LST412-242	7568	657.00	LST512-242	8728	678.00	LST612-242	10059	689.00
1400	LST214-242	6807	684.00	LST314-242	7872	698.00	LST414-242	9083	719.00	LST514-242	10475	743.00	LST614-242	12072	753.00
1600	LST216-242	7943	744.00	LST316-242	9182	757.00	LST416-242	10598	781.00	LST516-242	12219	804.00	LST616-242	14082	819.00
1800	LST218-242	9076	803.00	LST318-242	10492	819.00	LST418-242	12113	842.00						
2000	LST220-242	10209	862.00	LST320-242	11806	878.00	LST420-242	13625	903.00						
2200	LST222-242	11345	922.00	LST322-242	13116	939.00									
2400	LST224-242	12478	980.00	LST324-242	14430	1,000.00									
2600	LST226-242	13614	1,040.00	LST326-242	15740	1,060.00									
2800	LST228-242	14747	1,098.00	LST328-242	17050	1,120.00									

Code	Product	Price (£)
LSTHEAD	Thermostatic head to suit Eco LST - Oventrop	44.00

Notes

- All outputs are at Delta T50C
- Price includes cover, element and TRV body only
- Items highlighted in Green are from Stock
- All other sizes are available with a 4 weeks delivery time
- All dimensions are in millimetres
- All prices subject to VAT



SUPER LST

Covers for Eco Radiators



LST Cover			Eco Rad			BTUs	Price (£)
Code	Height	Width	Code	Height	Width		
ST606	600	600	TD404	400	400	1622	388.00
ST608	600	800	TD406	400	600	2434	456.00
ST610	600	1000	TD408	400	800	3244	491.00
ST612	600	1200	TD410	400	1000	4055	509.00
ST614	600	1400	TD412	400	1200	4867	556.00
ST616	600	1600	TD414	400	1400	5679	570.00
ST618	600	1800	TD416	400	1600	6488	632.00
ST620	600	2000	TD418	400	1800	7301	683.00
ST706	700	600	TD504	500	400	1957	414.00
ST708	700	800	TD506	500	600	2893	476.00
ST710	700	1000	TD508	500	800	3854	507.00
ST712	700	1200	TD510	500	1000	4819	526.00
ST714	700	1400	TD512	500	1200	5809	541.00
ST716	700	1600	TD514	500	1400	6747	594.00
ST718	700	1800	TD516	500	1600	7713	636.00
ST720	700	2000	TD518	500	1800	8674	658.00
ST806	800	600	TD604	600	400	2218	440.00
ST808	800	800	TD606	600	600	3328	496.00
ST810	800	1000	TD608	600	800	4435	526.00
ST812	800	1200	TD610	600	1000	5546	549.00
ST814	800	1400	TD612	600	1200	6653	594.00
ST816	800	1600	TD614	600	1400	7762	636.00
ST818	800	1800	TD616	600	1600	8871	666.00
ST820	800	2000	TD618	600	1800	9981	724.00

Notes

- All outputs at Delta T50
- Cover depth 125mm
- **Cover Price incl TRV and brackets. Radiators are extra.**
- **Price includes high quality factory fitted temper proof TRV**
- **Please refer to Eco Rad section for radiator prices**
- All dimensions are in millimetres
- All prices subject to VAT

4 Column		4/65 - 600 HIGH			4/75 - 700 HIGH			4/95 - 900 HIGH			Optional extra	
Length	Nos of Sections	Watts T 50	BTUs T 50	Price (€)	Watts T 50	BTUs T 50	Price (€)	Code T 50	BTUs T 50	Price (€)	No of feet included	No of stays suggested
240	4	480	1640	187.00	552	1884	208.46	716	2444	265.16	2	2
360	6	720	2460	273.98	828	2826	305.42	1074	3666	388.50	2	2
480	8	960	3280	360.96	1104	3768	402.38	1432	4888	511.84	2	2
600	10	1200	4100	447.94	1380	4710	499.34	1790	6110	635.18	2	2
720	12	1440	4920	541.44	1656	5652	603.57	2148	7332	767.76	3	3
840	14	1680	5740	628.42	1932	6594	700.53	2506	8554	891.10	3	3
960	16	1920	6560	715.40	2208	7536	797.49	2864	9776	1,014.44	3	3
1080	18	2160	7380	802.38	2484	8478	894.45	3222	10998	1,137.78	3	3
1200	20	2400	8200	889.36	2760	9420	991.41	3580	12220	1,261.12	3	3
1320	22	2640	9020	976.34	3036	10362	1,088.37	3938	13442	1,384.46	3	3
1440	24	2880	9840	1,069.84	3312	11362	1,192.60	4296	14664	1,517.04	4	3
1560	26	3120	10660	1,156.82	3588	12246	1,289.56	4654	15886	1,640.38	4	3
1680	28	3360	11480	1,243.80	3864	13188	1,386.52	5012	17108	1,763.72	4	3
1800	30	3600	12300	1,330.78	4140	14130	1,483.48	5370	18330	1,887.06	4	3
1920	32	3840	13120	1,417.76	4416	15072	1,580.44	5728	19552	2,010.40	4	3
2040	34	4080	13940	1,504.74	4692	16014	1,677.40	6086	20774	2,133.74	4	3

6 Column		6/48 - 422 HIGH			6/65 - 600 HIGH			Optional extra	
Length	Nos of Sections	Watts T 50	BTUs T 50	Price (€)	Watts T 50	BTUs T 50	Price (€)	No of feet included	No of stays suggested
240	4	492	1680	205.12	688	2348	272.34	2	2
360	6	738	2520	300.52	1032	3522	399.00	2	2
480	8	984	3360	395.92	1376	4696	525.66	2	2
600	10	1230	4200	491.32	1720	5870	652.32	2	2
720	12	1476	5040	593.88	2064	7044	788.49	3	3
840	14	1722	5880	689.28	2408	8218	915.15	3	3
960	16	1968	6720	784.68	2752	9392	1,041.81	3	3
1080	18	2214	7560	880.08	3096	10566	1,168.47	3	3
1200	20	2460	8400	975.48	3440	11740	1,295.13	3	3
1320	22	2706	9240	1,070.88	3784	12914	1,421.79	3	3
1440	24	2952	10080	1,173.44	4128	14088	1,557.96	4	3
1560	26	3198	10920	1,268.84	4472	15262	1,684.62	4	3
1680	28	3444	11760	1,364.24	4816	16436	1,811.28	4	3
1800	30	3690	12600	1,459.64	5160	17610	1,937.94	4	3
1920	32	3936	13440	1,555.04	5504	18784	2,064.60	4	3
2040	34	4182	14280	1,650.44	5848	19958	2,191.26	4	3

LIST PRICE (per section)

Product Code	Standard Section	Product Code	Footed Section
4/65	43.49	4/65F	50.01
4/75	48.48	4/75F	55.75
4/95	61.67	4/95F	70.91
6/48	47.70	6/48F	54.86
6/65	63.33	6/65F	72.84

Accessories

Code	Product Description	Price (€)
RS1	Retaining stays - each (optional)	19.01
RF2	Tiger paw foot each (optional)	60.46
JK5	Joining key	234.25

Notes

- Radiator price includes air vent, plug and bushes. Retaining stays are optional extra
- Radiators are finished in primer based paint (RAL 7022)
- Product available in different RAL colours and special finishes
- Standard RAL colours surcharge + €60 per section
- Special paint finish surcharge + €90 per section
- Delivery time for primer based finish is 48 hours
- Delivery time for all other finishes will be 3 - 4 weeks.

WARNING: Please note that these products are not water tested. All joints should be tightened and checked before filling. A joining key will be required for this purpose



RF2

RENAISSANCE

Cast Iron Radiator

10
YEAR
GUARANTEE

2 Column		600/180 - 760 HIGH			800/180 - 954 HIGH			Optional extra	
Length	Nos of Sections	Watts T 50	BTUs T 50	Price (£)	Watts T 50	BTUs T 50	Price (£)	No of feet included	No of stays suggested
305	4	619	2113	299.14	724	2470	408.24	2	2
382	5	774	2641	368.71	906	3090	503.17	2	2
458	6	929	3169	438.28	1087	3790	598.10	2	2
535	7	1084	3698	507.85	1268	4325	693.03	2	2
611	8	1238	4226	577.42	1449	4945	787.96	2	2
687	9	1393	4754	646.99	1630	5560	882.89	2	2
764	10	1548	5282	716.56	1811	6180	977.82	2	2
993	13	2013	6867	935.70	2355	8034	1,276.87	3	3
1145	15	2322	7923	1,074.84	2717	9270	1,466.73	3	3
1298	17	2632	8980	1,213.98	3079	10505	1,656.59	3	3
1451	19	2941	10036	1,353.12	3441	11740	1,846.45	3	3

Technical Detail (per section)

Type	Column	Depth	Width	Height	Watts	BTUs T50	Tapping dist
600/180	2	203	76	760	155	528	600
800/180	2	203	76	954	182	620	795

LIST PRICE (per section)

Product Code	Standard section	Product Code	Footed section
600/180	69.57	600/180F	80.00
800/180	94.93	800/180F	109.19

Accessories

Code	Product Description	Price (£)
RS1	Retaining stays - optional	19.01
JK5	Joining key	234.25



Notes

- Radiator price includes air vent, plug and bushes. Retaining stays are optional extra
- Radiators are finished in primer based paint. (RAL 7022)
- Product available in different RAL colours and special finishes
- Standard RAL colours surcharge + £60 per section
- Special paint finish surcharge + £90 per section
- Delivery time for primer based finish is 48 hours
- Delivery time for all other finishes will be 3 - 4 weeks
- All dimensions are in millimetres
- All prices subject to VAT

WARNING: These products are not water tested. All joints should be tightened and checked before filling. A joining key will be required for this purpose



Code	Finish	Type	Height	Width	Sections	Watts	BTU	Price (£)
JUB218VSW	White	Single	1800	280	3	843	2876	220.00
JUB318VSW	White	Single	1800	375	4	1124	3835	264.00
JUB218VSA	Anthracite	Single	1800	280	3	843	2876	220.00
JUB318VSA	Anthracite	Single	1800	375	4	1124	3835	264.00

Towel Bar (Optional)

Code	Finish	Description	Price (£)
TB1	Chrome	Towel bar to suit 280 mm wide Jubilee Radiator	50.60
TB2	Chrome	Towel bar to suit 375 mm wide Jubilee Radiator	66.00

Notes

- Side Connections
- All dimensions are in millimetres
- All prices subject to VAT

CLASSIC MULTI COLUMN

Horizontal - Tubular Steel

5
YEAR
GUARANTEE

Code	Columns	Depth	Height	Width	Sections	Watts	BTU	Price (£)
205010	2	68	500	460	10	466	1590	184.93
205014	2	68	500	636	14	652	2226	246.14
205018	2	68	500	812	18	839	2862	307.37
205022	2	68	500	988	22	1025	3498	368.58
206010	2	68	600	460	10	552	1885	199.04
206014	2	68	600	636	14	773	2639	265.70
206018	2	68	600	812	18	994	3392	332.39
206022	2	68	600	988	22	1215	4146	399.10
206026	2	68	600	1164	26	1436	4900	465.74
206030	2	68	600	1340	30	1657	5654	532.45
306010	3	100	600	465	10	810	2765	236.37
306014	3	100	600	643	14	1135	3871	318.29
306018	3	100	600	821	18	1459	4977	400.22
306022	3	100	600	999	22	1783	6083	482.13
306026	3	100	600	1177	26	2107	7189	564.05
306030	3	100	600	1355	30	2431	8295	645.98
403022	4	140	300	988	22	1310	4469	435.66
403030	4	140	300	1340	30	1786	6094	584.80
405010	4	140	500	460	10	941	3210	257.02
405014	4	140	500	636	14	1317	4494	348.28
405018	4	140	500	812	18	1693	5778	439.56
405022	4	140	500	988	22	2070	7062	530.81
405026	4	140	500	1164	26	2446	8346	609.81
405030	4	140	500	1340	30	2822	9630	699.48
406010	4	140	600	460	10	1114	3799	279.80
406014	4	140	600	636	14	1559	5319	379.91
406018	4	140	600	812	18	2004	6838	479.99
406022	4	140	600	988	22	2450	8358	580.10
406026	4	140	600	1164	26	2895	9878	663.40
406030	4	140	600	1340	30	3341	11397	764.48
407510	4	140	750	460	10	1373	4683	314.03
407514	4	140	750	636	14	1922	6556	427.37
407518	4	140	750	812	18	2471	8429	540.73
407522	4	140	750	988	22	3020	10303	654.05

Notes

- Radiator comes with wall mounting brackets.
- Radiators are finished in white colour
- Product available in different RAL colours
- RAL colours surcharge £30 per section
- Delivery time for white colour is 48 hours
- Delivery time for all other finishes will be 3 - 4 weeks.
- All dimensions are in millimetres
- All prices subject to VAT



ZE086



ZE089

CLASSIC MULTI COLUMN

Vertical - Tubular Steel



Code	Columns	Depth	Height	Width	Sections	Watts T50	BTU T50	Price (£)
218006	2	68	1800	284	6	953	3252	262.89
218008	2	68	1800	372	8	1271	4336	336.37
218010	2	68	1800	460	10	1589	5420	409.80
218012	2	68	1800	548	12	1906	6504	483.22
318006	3	100	1800	287	6	1419	4841	316.76
318008	3	100	1800	376	8	1892	6454	408.90
318010	3	100	1800	465	10	2365	8068	500.97
318012	3	100	1800	554	12	2838	9682	593.15

Accessories

Code	Description	Price (£)
ZE086	Floor Standing Brackets Per Pair	137.52
ZE087	Packet Of Extra Brackets	26.45
ZE089/2	New Style Floor Brackets (Pair) For 2 Column Radiator	69.30
ZE089/3	New Style Floor Brackets (Pair) For 3 Column Radiator	69.30
ZE089/4	New Style Floor Brackets (Pair) For 4 Column Radiator	69.30

The classic design of this steel column radiator can complement any décor or style be it a modern new build through to a warehouse conversion the classic will suit all. With a variety of heights and widths plus two, three or four columns the Classic multi-column is sure to fit in with any design, modern, contemporary or commercial. The standard model comes in white but is also available in a range of RAL colours to enhance any appearance, the Classic is the perfect choice.

Notes

- Radiator comes with wall mounting brackets.
- Radiators are finished in white colour
- Product available in different RAL colours
- RAL colours surcharge £40 per section
- Delivery time for white colour is 48 hours
- Delivery time for all other finishes will be 3 - 4 weeks.
- All dimensions are in millimetres
- All prices subject to VAT

ECO RETRO

Textured Anthracite Steel Column Radiator

5
YEAR
GUARANTEE

Code	Columns	Depth	Height	Width	Sections	Watts	BTU	Price (£)
R206014	2	63	600	669	14	773	2639	373.12
R206018	2	63	600	853	18	994	3392	466.40
R206022	2	63	600	1037	22	1215	4146	562.02
R406014	4	139	600	669	14	1559	5319	562.02
R406018	4	139	600	853	18	2004	6838	569.01
R406022	4	139	600	1037	22	2450	8358	684.45
R406026	4	139	600	1221	26	2895	9878	810.37
R406030	4	139	600	1405	30	3341	11397	942.13
R407514	4	139	750	669	14	1922	6556	523.54
R407518	4	139	750	853	18	2471	8429	642.47

Code	Product Description	Price (£)
RE086	Decorative Foot (Each)	39.65
RE087	Packet of Brackets (Included in Price)	34.98



This stunning textured anthracite multi-column radiator goes right to the core of chic design and brings out stylish warmth to this model. Looks equally at home in a modern or traditional setting.



Notes

- Radiators are finished with our exclusive textured metallic finish
- All outputs are at Delta T50
- **RE087 fixings must be used at all times.**
The foot is optional and a decorative feature.
- All dimensions are in millimetres
- All prices subject to VAT

Flat Profile Steel Horizontal Radiator

Code	Colour	Type	Height	Width	Sections	Watts	BTU	Price (£)
BED508HSW	White	10	550	800	539	1840	750	218.90
BED510HSW	White	10	550	1000	654	2233	950	246.40
BED512HSW	White	10	550	1200	770	2626	1150	277.20
BED508HDW	White	20	550	800	1006	3433	750	299.20
BED510HDW	White	20	550	1000	1237	4220	950	327.80
BED512HDW	White	20	550	1200	1467	5006	1150	365.20
BED508HSA	Anthracite	10	550	800	539	1840	750	227.66
BED510HSA	Anthracite	10	550	1000	654	2233	950	256.26
BED512HSA	Anthracite	10	550	1200	770	2626	1150	288.29
BED508HDA	Anthracite	20	550	800	1006	3433	750	311.17
BED510HDA	Anthracite	20	550	1000	1237	4220	950	329.48
BED512HDA	Anthracite	20	550	1200	1467	5006	1150	379.81



Textured anthracite finish

Notes

- Wall to centre of tapping is 25-45mm for single radiator
- Wall to centre of tapping is 60-80mm for double radiator
- Bottom connections
- All outputs are at Delta T50
- All dimensions are in millimetres
- All prices are subject to VAT

BAKER

Flat Profile Steel Radiator

5
YEAR
GUARANTEE

Horizontal Radiator

Code	Colour	Type	Height	Width	BTU	C to C	Price (£)
BAK608HSW	White	10	600	838	2261	838	232.25
BAK610HSW	White	10	600	990	2672	990	269.75
BAK612HSW	White	10	600	1218	3288	1218	308.52
BAK608HDW	White	20	600	838	4147	838	354.75
BAK610HDW	White	20	600	990	4901	990	419.20
BAK612HDW	White	20	600	1218	6032	1218	486.88
BAK608HSA	Anthracite	10	600	838	2261	838	241.53
BAK610HSA	Anthracite	10	600	990	2672	990	280.54
BAK612HSA	Anthracite	10	600	1218	3288	1218	320.86
BAK608HDA	Anthracite	20	600	838	4147	838	368.94
BAK610HDA	Anthracite	20	600	990	4901	990	435.97
BAK612HDA	Anthracite	20	600	1218	6032	1218	506.36



Notes

- Radiator comes with wall mounting brackets.
- Radiators are finished in white or sparkling textured anthracite colour
- Wall to centre of tapping is 37mm for single radiator
- Wall to centre of tapping is 67mm for double radiator
- Side connections
- All outputs are at Delta T50
- All dimensions are in millimetres
- All prices are subject to VAT

Vertical Radiator

Code	Colour	Type	Height	Width	BTU	C to C	Price (£)
BAK418VSW	White	10	1800	458	3254	458	247.80
BAK518VSW	White	10	1800	534	3796	534	282.14
BAK418VDW	White	20	1800	458	6305	458	389.24
BAK518VDW	White	20	1800	534	7356	534	449.97
BAK418VSA	Anthracite	10	1800	458	3254	458	257.71
BAK518VSA	Anthracite	10	1800	534	3796	534	293.43
BAK418VDA	Anthracite	20	1800	458	6305	458	404.80
BAK518VDA	Anthracite	20	1800	534	7356	534	467.97



Vertical Radiator

Code	Colour	Type	Height	Width	BTU	C to C	Price (£)
CAV418VSW	White	10	1800	400	3454	400	258.20
CAV4618VSW	White	10	1800	464	3948	464	285.44
CAV418VDW	White	20	1800	400	6935	400	473.30
CAV4618VDW	White	20	1800	464	7698	464	521.64
CAV418VSA	Anthracite	10	1800	400	3454	400	265.94
CAV4618VSA	Anthracite	10	1800	464	3948	464	287.61
CAV418VDA	Anthracite	20	1800	400	6935	400	447.70
CAV4618VDA	Anthracite	20	1800	464	7698	464	488.44



Horizontal Radiator

Code	Colour	Type	Height	Width	BTU	C to C	Price (£)
CAV608HSW	White	10	600	780	2653	780	201.68
CAV610HSW	White	10	600	988	3470	988	239.08
CAV612HSW	White	10	600	1162	4082	1162	279.77
CAV608HDW	White	20	600	780	5040	780	321.95
CAV610HDW	White	20	600	988	6593	988	390.92
CAV612HDW	White	20	600	1162	7755	1162	433.20
CAV608HSA	Anthracite	10	600	780	2653	780	207.73
CAV610HSA	Anthracite	10	600	988	3470	988	246.25
CAV612HSA	Anthracite	10	600	1162	4082	1162	288.16
CAV608HDA	Anthracite	20	600	780	5040	780	331.61
CAV610HDA	Anthracite	20	600	988	6593	988	402.65
CAV612HDA	Anthracite	20	600	1162	7755	1162	446.19



Notes

- Radiator comes with wall mounting brackets.
- Radiators are finished in metallic white or metallic anthracite colour
- Wall to centre of tapping is 51mm
- Side connections
- All outputs are at Delta T50
- All dimensions are in millimetres
- All prices are subject to VAT

VERTEX

Vertical steel panel radiator

5
 YEAR
 GUARANTEE

Code	Height	Width	Watts	BTU	C to C	Price (£)
DLP314	1400	300	1524	5201	240	685.64
DLP414	1400	400	1911	6522	340	708.04
DLP514	1400	500	2289	7812	440	761.80
DLP614	1400	600	2659	9075	540	829.01
DLP316	1600	300	1741	5942	240	708.04
DLP416	1600	400	2186	7461	340	730.44
DLP516	1600	500	2615	8925	440	779.72
DLP616	1600	600	3039	10372	540	862.63
DLP318	1800	300	1959	6686	240	730.44
DLP418	1800	400	2458	8389	340	752.84
DLP518	1800	500	2942	10041	440	806.61
DLP618	1800	600	3418	11666	540	873.81
DLP320	2000	300	2177	7430	240	797.66
DLP420	2000	400	2730	9317	340	818.88
DLP520	2000	500	3269	11157	440	851.41
DLP620	2000	600	3797	12960	540	941.05

Notes

- Wall to centre of tapping 56-66mm
- Overall projection 91-101mm
- Bottom connection
- Colour - RAL 9016
- All outputs at Delta T60
- All dimensions are in millimetre
- All prices are subject to VAT



Floor and Wall Mounted

Code	Height	Width	Watts	BTU	C to C	Element	Fuel Type	Price (£)
REN-01	963	673	999	3410	528	600	C/E/D	328.90
REN-02	963	538	711	2425	393	600	C/E/D	306.90



REN-01



REN-02



REN-03

Wall Mounted

Code	Height	Width	Watts	BTU	C to C	Element	Fuel Type	Price (£)
REN-03	491	741	570	1945	460	400	C/E/D	273.90

Notes

- All outputs at Delta T50
- All dimensions are in millimetres
- All prices subject to VAT

DESIGNER TOWEL RAIL

5
YEAR
GUARANTEE

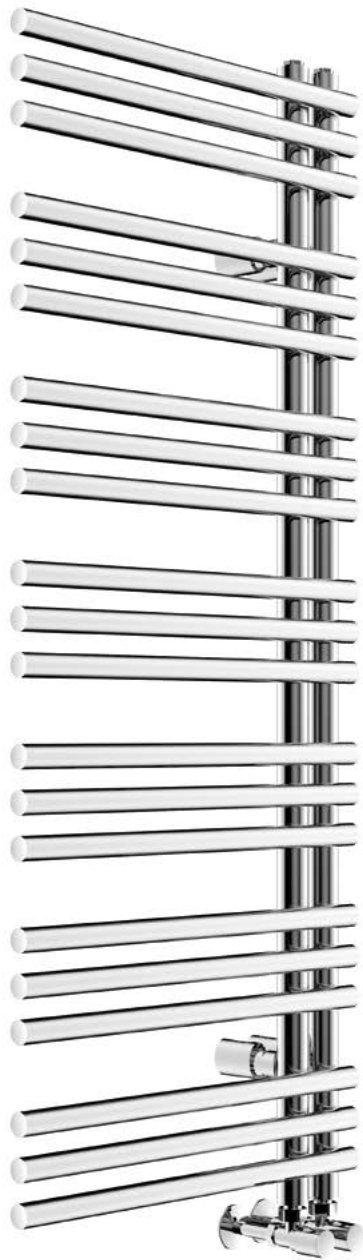
OXFORD - Chrome Elliptical Steel towel rail

Code	Height	Width	Watts	BTU	C to C	Element	Fuel Type	Price (£)
OXF509CH	910	500	318	1085	450	300	C/E/D	302.50
OXF512CH	1190	500	402	1372	450	400	C/E/D	330.00



DUKE - Chrome Round on Round Steel towel rail

Code	Height	Width	Watts	BTU	C to C	Element	Fuel Type	Price (£)
DUK510CH	1050	500	353	1204	50	300	C/E/D	363.00
DUK512CH	1250	500	413	1409	50	400	C/E/D	412.50



Notes

- Duke can be fitted left or right handed
- All outputs at Delta T50
- All dimensions are in millimetres
- All prices subject to VAT

BOND - Chrome curved Rectangular on Round Steel towel rail

Code	Height	Width	Watts	BTU	C to C	Element	Fuel Type	Price (£)
BON512CH	1162	500	348	1187	428	300	C/E/D	357.50



BELGRAVE - Chrome Round on Round Steel towel rail

Code	Height	Width	Watts	BTU	C to C	Element	Fuel Type	Price (£)
BEL612CH	1200	600	359	1225	80	300	C/E/D	357.50



Notes

- Belgrave can be fitted left or right handed
- All outputs at Delta T50
- All dimensions are in millimetres
- All prices subject to VAT

DESIGNER TOWEL RAIL

5
YEAR
GUARANTEE

CHARLOTTE - Chrome Electric Coat Hanger

Code	Height	Diameter	Watts	BTU	Price (£)
CHA1600CH	1643	36	45	154	372.90



MERRION - Chrome Square in Square Steel towel rail

Code	Height	Width	Watts	BTU	C to C	Element	Fuel Type	Price (£)
MER508CH	818	500	230	785	470	150	C/E/D	225.50
MER512CH	1194	500	340	1160	470	300	C/E/D	275.00



Notes

- All outputs at Delta T50
- All dimensions are in millimetres
- All prices subject to VAT

CANONBURY - Copper Lacquer Steel towel rail

Code	Height	Width	Watts	BTU	C to C	Element	Fuel Type	Price*
CAN512	1200	500	259	882	465	150	C/E/D	275.00



Notes

- All outputs at Delta T50
- All dimensions are in millimetres
- All prices subject to VAT

CARNABY - Chrome Flat Profile Steel towel rail

Code	Height	Width	Watts	BTU	C to C	Element	Fuel Type	Price (£)
CAR412CH	1200	450	305	1041	400	150	C/E/D	302.50
CAR612CH	1200	600	380	1297	550	300	C/E/D	330.00



DESIGNER TOWEL RAILS

Stainless Steel

10
YEAR
GUARANTEE

PETTICOAT - Polished Stainless Steel Round in round towel rail

Code	Height	Width	Watts	BTU	C to C	Element	Fuel Type	Price (£)
PET508P	800	500	305	1040	468	150	C/E/D	236.50
PET510P	1000	500	395	1348	468	300	C/E/D	280.50
PET512P	1200	500	475	1620	468	400	C/E/D	319.00



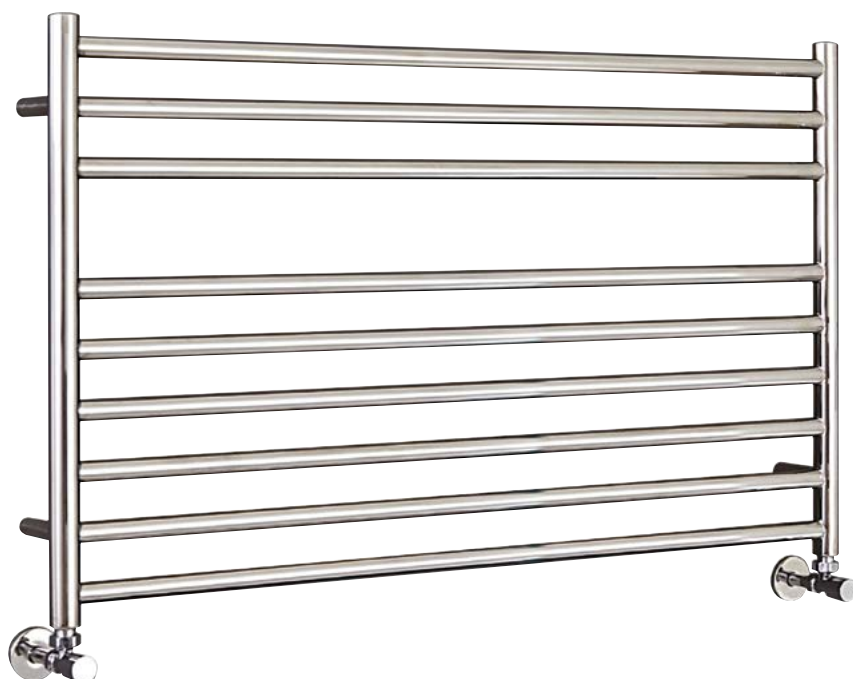
DOWNING - Polished Stainless Steel Square in Square towel rail

Code	Height	Width	Watts	BTU	C to C	Element	Fuel Type	Price (£)
DOW508P	800	500	305	1040	465	150	C/E/D	357.50
DOW510P	1000	500	395	1347	465	300	C/E/D	411.40
DOW512P	1200	500	475	1620	465	400	C/E/D	482.90



HANOVER - Polished Stainless Steel Round in round towel rail

Code	Height	Width	Watts	BTU	C to C	Element	Fuel Type	Price (£)
HAN512P	500	1200	365	1245	1168	300	C/E/D	295.90



Notes

- All outputs at Delta T50
- All dimensions are in millimetres
- All prices subject to VAT



RADIATOR VALVES & EXTENSIONS

VALVES



TRV+

Code	Description	Price (£)
TRVSETCA	Chrome Angled Trv Set Including Lockshield	40.00
TRVSETCS	Chrome Straight Trv Set Including Lockshield	40.00
TRVSETCC	Chrome Corner Trv Set Including Lockshield	40.00
TRV+	White Angled Trv Set With Lockshield	14.00
TRVSETCW	Chrome Angled Wooden Head Trv Set Including Lockshield	60.00
TRVSETBW	Brass Angled Wooden Head Trv Set Including Lockshield	60.00
BV15	Traditional Brass Valve (Pair) - Non Thermostatic	97.01
BV15T	Traditional Brass Valve (Pair)- Thermostatic	139.52
TRVMONOCA	Chrome Mono Block Angled Design Valve	90.00
CARV	Chrome Angled Round Valve (Pair)	26.00



TRVSETCS



TRVSETCC



TRVSETCA



BV15



TRVSETCW



TRVSETBW



BV15T



TRVMONOCA



CARV

RADIATOR VALVES & EXTENSIONS

VALVES & EXTENSIONS

Code	Description	Price (£)
CSRV	Chrome Straight Round Valve (Pair)	26.00
CASV	Chrome Angled Square Valve (Pair)	30.00
CSSV	Chrome Straight Square Valve (Pair)	30.00
CCRV	Chrome Corner Round Lockshield Valve Set	30.00
COASV	Copper Angled Square Valve (Pair)	40.00
COSSV	Copper Straight Square Valve (Pair)	40.00
CACHV	Chrome Angled Cross Head Valve (Pair)	40.00
CSCHV	Chrome Straight Cross Head Valve (Pair)	40.00
CPCSET	180mm Chrome Pipe Cover Set	23.00
20	20mm Extension	3.25
30	30mm Extension	4.25
40	40mm Extension	5.25



CSRV



CASV



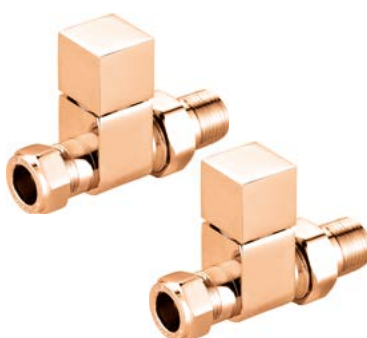
CSSV



CCRV



COASV



COSSV



CPCSET



CSCHV



CACHV



20/30/40

WATER HEATERS



ARISTON - ELECTRIC



Code	Product	Part Number	Price (£)
UNDER SINK WATER HEATERS			
EP10UR/2KW	10 ltr 2kw water heater	877068 / 3100306	186.00
EP10UR/3KW	10 ltr 3kw water heater	877067 / 3100303	215.00
EP15UR/2KW	15 ltr 2kw water heater	877071 / 3100310	210.00
EP15UR/3KW	15 ltr 3kw water heater	877070 / 3100309	245.00
OVER SINK WATER HEATERS			
EP10OR/3KW	10 ltr 3kw water heater	877066 / 3100302	215.00
EP15OR/3KW	15 ltr 3kw water heater	877069 / 3100308	245.00
EP30R	30 ltr 3kw water heater Including Kit A & Kit B	877072 / 3100311	611.00
OPEN OUTLET WATER HEATERS			
PICCOLO	5 ltr 2kw with spout & control	868871 / 3100525	146.00
WALL HUNG WATER HEATERS			
ST50	ARISTON PRO 1 ECO 50L UK + KIT	3820019	524.00
ST80	ARISTON PRO 1 ECO 80L UK + KIT	3820020	595.00
ST100	ARISTON PRO 1 ECO 100L UK + KIT	3820021	655.00
UNVENTED WALL HUNG WATER HEATERS			
VELIS45W	Velis 45 WIFI 3kW + Kit	3626307	680.00
VELIS80W	Velis 80 WIFI 3kW + Kit	3626308	730.00
INSTANTANEOUS WATER HEATERS			
Aures9	Aures slim multi-point 9.5kw water heater	3520028	181.00

ARISTON - GAS/LPG

Code	Product	Part Number	Price (£)
WALL HUNG GAS FIRED MULTI POINT WATER HEATERS - FAN FLUE SYSTEM			
NEXT16	Ariston 16i Instantaneous Water Heater - 30kw (16ltr / min) ng	3632533	524.00
NEXT11LPG	Ariston 11i Instantaneous Water Heater - 24kw (11ltr / min) lpg	3632535	524.00
NVT	Next Vertical flue with black terminal 60/100 (se) & adapter	3318855/3318008	222.00
NHF	Next 1 meter horiz flue kit 60/100 (se)	3318000	69.00

ACCESSORIES

Code	Product	Part Number	Price (£)
KITA	2 Ltr Expansion Vessel	406801	72.00
KITB	Pre-set 3.5 Bar Press Red Valve	406802	58.00
KITC	Discharge Tundish (15Mm - 22Mm)	406807	15.00

Notes

- 3 year warranty
- Kit A comes with non return valve
- All prices subject to VAT
- Helpline Number 0870 241 8180
- www.ariston.co.uk

Rapid Boilers

RAPID BOILERS

Code	Description	Flow Rate @35°C	Price (£)
R25H	Rapid 25kw combi Horizontal pack including flue and jig	11.20 ltrs per min	1084.58
R25V	Rapid 25kw combi Vertical pack including flue and jig	11.20 ltrs per min	1174.81
R32H	Rapid 32kw combi Horizontal pack including flue and jig	13.20 ltrs per min	1174.64
R32V	Rapid 32kw combi Vertical pack including flue and jig	13.20 ltrs per min	1231.40
R25H+	Rapid 25kw plus combi Horizontal pack including flue and jig	11.20 ltrs per min	1197.13
R25V+	Rapid 25kw plus combi Vertical pack including flue and jig	11.20 ltrs per min	1308.48
R32H+	Rapid 32kw plus combi Horizontal pack including flue and jig	13.20 ltrs per min	1390.52
R32V+	Rapid 32kw plus combi Vertical pack including flue and jig	13.20 ltrs per min	1444.41

RAPID BOILER ACCESSORIES

Code	Description	Part Number	Price (£)
RHF	Rapid horizontal Flue (60/100)	083442	128.76
RVT	Rapid vertical terminal (60/100)	086838	153.87
RVA	Rapid vertical adaptor (60/100)	086807	79.68
R90	Rapid Flue Elbow 90° Kit (60/100) - single	087617	61.40
R45	Rapid Flue Elbow 45° Kit (60/100) - single	087616	58.79
RX1000	Rapid 1000mm flue extension (60/100)	086649	85.71
RFF	Rapid flat roof slate	087372	41.96
RPF	Rapid pitched roof slate	087910	78.07
RPK	Rapid Plume Kit	083445	138.26
R25LPG	Intergas / Rapid LPG Kit 480 EC030 CC24 OV24 R25	076067	35.23
R32LPG	Intergas / Rapid LPG Kit EC036 CC30 CC40 SB30 OV30 R32	076077	35.23
IGSF	Intergas system filter -	090897	204.75



Notes

- Rapid has 5 year warranty *
- Rapid plus has 8 year warranty*
- All prices subject to VAT
- Helpline number 01527 888 000
- www.intergasheating.co.uk

* Only if fitted with Intergas System Filter - IGSF

INTERGAS ECO AND HRE BOILERS



Notes

- HRE has 9 year warranty *
- ECO RF has 12 year warranty *
- XCLUSIVE NF has 12 year warranty *
- XTREME NF has 9 year warranty *
- HRE has 5 year warranty
- ECO RF has 10 year warranty
- All prices subject to VAT
- Helpline number 01527 888 000
- www.intergasheating.co.uk

Code	Part Number	Description	Price (£)
ECO RF COMBI COMPACT			
ECO24CX	049517	Intergas Combi Compact Eco RF 24kw (049517)	1485.42
ECO30CX	049577	Intergas Combi Compact Eco RF 30kw (049577)	1606.36
ECO36CX	049637	Intergas Combi Compact Eco RF 36kw (049637)	1727.14
HRE COMBI COMPACT			
HRE2418CX	049508	Intergas Combi Compact HRE 24/18kw (049508)	1294.67
HRE2824CX	049568	Intergas Combi Compact HRE 28/24kw (049568)	1447.48
HRE3630CX	049628	Intergas Combi Compact HRE 36/30kw (049628)	1576.62
HRE3640CX	049688	Intergas Combi Compact HRE 36/40kw (049688)	1754.54
HRE SYSTEM BOILERS			
HRE18SX	049528	Intergas System Boiler HRE 18kw (049528)	1264.26
HRE24SX	049588	Intergas System Boiler HRE 24kw (049588)	1421.45
HRE30SX	049648	Intergas System Boiler HRE 30kw (049648)	1555.96
HRE40SX	049708	Intergas System Boiler HRE 40kw (049708)	1731.66
HRE OPEN VENT BOILERS			
HRE18HX	049547	Intergas Open Vent Boiler HRE 18kw (049547)	1202.59
HRE24HX	049607	Intergas Open Vent Boiler HRE 24kw (049607)	1348.05
HRE30HX	049667	Intergas Open Vent Boiler HRE 30kw (049667)	1494.59
XCLUSIVE NG COMBI COMPACT			
XCLUSIVE24CX	035104	Intergas Xclusive Combi Boiler NG 24KW (035104)	1613.00
XCLUSIVE30CX	035114	Intergas Xclusive Combi Boiler NG 30KW (035114)	1717.13
XCLUSIVE36CX	035124	Intergas Xclusive Combi Boiler NG 36KW(035124)	1873.00
XTREME NG COMBI COMPACT			
XTREME24CX	035004	Intergas Xtreme Combi Boiler NG 24KW(035004)	1898.13
XTREME30CX	035014	Intergas Xtreme Combi Boiler NG 30KW(035014)	2002.00
XTREME36CX	035024	Intergas Xtreme Combi Boiler NG 36KW(035024)	2237.00
ACCESSORIES			
R18LPG	076057	INTERGAS LPG KIT 410 ECO24, CC24/18, SB18, OV18	29.57
R25LPG	076067	INTERGAS LPG KIT 480 ECO30 CC24 SB24 OV24 R25	35.23
R32LPG	076077	INTERGAS LPG KIT 525 ECO36 CC30 CC40 SB40 SB30 OV30 R32	35.23
IGPK90	081284	INTERGAS PMK BEND PP60 90°	30.13
IGPK45	081285	INTERGAS PMK BEND PP60 45° - PAIR	59.53
IGPX	081286	INTERGAS 1000MM PLUME MANAGEMENT EXTENSION INC. WALL CLAMP	59.53
IGPK	081294	INTERGAS PLUME MANAGEMENT KIT	96.28
IGTF	081297	INTERGAS TELESCOPIC HORIZONTAL STRAIGHT WALL TERMINAL	120.43
IGHF	081298	INTERGAS HORIZ. TELESCOPIC OFFSET W/TERM FLUE KIT - 520MM	143.32
IGF1000	082969	INTERGAS 1000MM STANDARD FLUE	89.10
IGVF	082973	INTERGAS VERTICAL ROOF TERMINAL 60/100	142.96
IGX1000	082975	INTERGAS 1000MM FLUE EXTENTION - 60/100MM INC. WALL CLAMP	59.53
IGX500	082979	INTERGAS 500MM FLUE EXT - 60/100MM INC. WALL CLAMP	38.53
IGNTF	082980	INTERGAS NON-TELESCOPIC HORIZONTAL STRAIGHT WALL TERMINAL	143.32
IG90	084660	INTERGAS BEND 90° - 60/100	45.82
IG45	084661	INTERGAS BEND 45° (1 PER BOX) - 60/100	45.82
RFF	087372	INTERGAS WEATHER SLATE - FLAT ROOF	41.96
RPF	087910	INTERGAS WEATHER SLATE - PITCHED ROOF	78.07
IGKITB	090000	INTERGAS KIT B - 12LTR ROBOKIT WITH ISOLATION VALVES	101.22
IGKITC	090100	INTERGAS KIT C - 8LTR ROBOKIT WITH ISOLATION VALVES	85.94
IGRJ2418	093187	INTERGAS REAR JIG + EXP.VESSEL HRE 24/18 & ECO RF24	101.22
IGRJ2824	093197	INTERGAS REAR JIG + EXP.VESSEL HRE 28/24 & ECO RF30	101.22
IGRJ3630	093207	INTERGAS REAR JIG + EXP.VESSEL HRE 36/30, 36/40 & ECO RF36	101.22
IGOS	203207	INTERGAS OUTDOOR SENSOR	43.55
IGPVC	093217	INTERGAS PIPE VALVE COVER PLATE	34.80
IGLVC	092677	INTERGAS LARGE VALVE COVER PLATE HRE 40KW	34.80
IGCS	065117	INTERGAS CYLINDER SENSOR	29.57
IGVA	090547	INTERGAS VERTICAL ADAPTOR 60/100	80.50
IGSF	090897	INTERGAS SYSTEM FILTER -	204.75

* Only if fitted with Intergas System Filter - IGSF

Oil Boilers

FLOOR STANDING OIL HE

VORTEX PRO KITCHEN/UTILITY

Code	Description	Price (£)
INTERNAL STANDARD MODELS		
VTX15/21	Vortex Pro Kitchen/Utility 15-21kW	1,728.00
VTX15/26	Vortex Pro Kitchen/Utility 15-26kW	1,937.00
VTX26/36	Vortex Pro Kitchen/Utility 26-36kW	2,405.00
VTX36/46	Vortex Pro Kitchen/Utility 36-46kW	2,710.00
VTX46/58	Vortex Pro Kitchen/Utility 46-58kW	2,838.00
VTX58/70	Vortex Pro Kitchen/Utility 58-70kW	2,950.00

INTERNAL SEALED MODELS

VTXS15/26	Vortex Pro Kitchen/Utility System 15-26kW	2,163.00
VTXS26/36	Vortex Pro Kitchen/Utility System 15-26kW	2,750.00
VTXS36/46	Vortex Pro Kitchen/Utility System 15-26kW	2,950.00

VORTEX PRO OUTDOOR

EXTERNAL MODELS

VTXOM15/21	Vortex Pro External 15-21kW	2,066.00
VTXOM15/26	Vortex Pro External 15-26kW	2,331.00
VTXOM26/36	Vortex Pro External 26-36kW	2,773.00
VTXOM36/46	Vortex Pro External 36-46kW	3,120.00
VTXOM46/58	Vortex Pro External 46-58kW	3,240.00
VTXOM58/70	Vortex Pro External 58-70kW	3,466.00

VORTEX ECO UTILITY

INTERNAL STANDARD MODELS

VTXECO15/21	Vortex Eco Utility 15-21kW	1,585.00
VTXECO21/26	Vortex Eco Utility 21-26kW	1,737.00
VTXECO26/35	Vortex Eco Utility 26-35kW	2,075.00

VORTEX ECO OUTDOOR

EXTERNAL STANDARD MODELS

VTXOMECO15/21	Vortex Eco External 15-21kW	1,841.00
VTXOMECO21/26	Vortex Eco External 21-26kW	2,075.00
VTXOMECO26/35	Vortex Eco External 26-35kW	2,379.00

FLOOR STANDING COMBI OIL HE

VORTEX PRO COMBI

Code	Description	Price (£)
INTERNAL MODEL		
VTXCOMBI21	Vortex Pro Combi 21kW	2,944.00
VTXCOMBI26	Vortex Pro Combi 26kW	2,975.00
VTXCOMBI36	Vortex Pro Combi 36kW	3,328.00
EXTERNAL MODEL		
VTXOMCOMBI21	Vortex Pro Combi External 21kW	3,022.00
VTXOMCOMBI26	Vortex Pro Combi External 26kW	3,232.00
VTXOMCOMBI36	Vortex Pro Combi External 36kW	3,489.00

WALL HUNG OIL HE

VORTEX ECO WALL HUNG

Code	Description	Price (£)
INTERNAL STANDARD MODELS		
VTXWH12/16	Vortex Eco Wall Hung 12-16kW	1,817.00
VTXWH16/21	Vortex Eco Wall Hung 16-21kW	1,890.00
INTERNAL SEALED MODELS		
VTXSWH12/16	Vortex Eco Wall Hung System 12-16kW	2,075.00
VTXSWH16/21	Vortex Eco Wall Hung System 16-21kW	2,172.00
EXTERNAL STANDARD MODELS		
VTXOMWH12/16	Vortex Eco Wall Hung External 12-16kW	2,251.00
VTXOMWH16/21	Vortex Eco Wall Hung External 16-21kW	2,405.00
EXTERNAL SEALED MODELS		
VTXSOMWH12/16	Vortex Eco Wall Hung External System 12-16kW	2,485.00
VTXSOMWH16/21	Vortex Eco Wall Hung External System 16-21kW	2,638.00

BOILER HOUSE

VORTEX PRO BOILER HOUSE

Code	Description	Price (£)
VTXBH15/21	Vortex Pro Boiler House 15-21kW	1,411.00
VTXBH21/26	Vortex Pro Boiler House 21-26kW	1,470.00
VTXBH26/35	Vortex Pro Boiler House 26-35kW	2,123.00
VTXBH36/46	Vortex Pro Boiler House 36-46kW	2,444.00
VTXBH46/58	Vortex Pro Boiler House 46-58kW	2,750.00
VTXBH58/70	Vortex Pro Boiler House 58-70kW	2,838.00

OIL BOILERS

Code	Description	Price (£)
VORTEX ECO RANGE- EXTERNAL MODULES		
VTXSOMECO15/21	VTX Outdoor System Eco 15/21 Kw	2,172.00
VTXSOMECO21/26	VTX Outdoor System Eco 21/26 Kw	2,411.00
VTXSOMECO26/35	VTX Outdoor System Eco 26/35 Kw	2,815.00

Code	Description	Price (£)
VORTEX ECO RANGE- UTILITY MODELS		
VTXSECO15/21	VTX System Eco 15/21 Kw	1,890.00
VTXSECO21/26	VTX System Eco 21/26 Kw	2,051.00
VTXSECO26/35	VTX System Eco 26/35 Kw	2,372.00

Code	Description	Price (£)
VORTEX PRO RANGE- COMBI MODELS		
VTXXSCOMBI26	XS Indoor Combi 26 Kw Vortex	2,975.00
VTXBFCOMBI21	Vortex Blue Combi 21 Kw	3,385.00
VTXBFCOMBI26	Vortex Blue Combi 26 Kw	3,538.00
VTXBFCOMBI36	Vortex Blue Combi 36 Kw	3,847.00

Code	Description	Price (£)
VORTEXBLUE RANGE- EXTERNAL (OUTDOOR MODULES)		
VTXBFO21	Vortex Blue Outdoor 21 Kw	2,692.00
VTXBFO26	Vortex Blue Outdoor 26 Kw	2,847.00
VTXBFO36	Vortex Blue Outdoor 36 Kw	3,115.00
VTXBFOCOM21	Vortex Blue Outdoor Combi 21 Kw	3,462.00
VTXBFOCOM26	Vortex Blue Outdoor Combi 26 Kw	3,692.00
VTXBFOCOM36	Vortex Blue Outdoor Combi 36 Kw	4,001.00

Code	Description	Price (£)
VORTEXBLUE RANGE- UTILITY MODELS		
VTXBF21	Vortex Blue Kitc/Utility 21 Kw	2,386.00
VTXBF26	Vortex Blue Kitc/Utility 26 Kw	2,462.00
VTXBF36	Vortex Blue Kitc/Utility 36 Kw	2,847.00
VTXSBF21	Vortex Blue Kitc/Utility System 21 Kw	2,692.00
VTXSBF26	Vortex Blue Kitc/Utility System 26 Kw	2,770.00
VTXSBF36	Vortex Blue Kitc/Utility System 36 Kw	3,232.00

Notes

- All prices subject to VAT
- Help Line 01380 736920
- www.grantuk.com



GRANT

OIL BOILER

GREEN SYSTEM EXTERNAL HIGH LEVEL/VERTICAL FLUES

Code	Description	Price (£)
GE45/200B	ELBOW45 90/200 BLACK	80.70
GE45/90B	ELBOW45 50/90 BLACK	71.60
GEB200B	EXT WALL BRKT90/200 BLACK	31.70
GEB90B	EXT WALL BRKT 50/90 BLACK	27.20
GK200B	STARTER KIT 90/200 BLACK/SS	228.00
GK200SB	STARTER KIT 90/200 SRT BLACK/SS	212.00
GK90B	STARTER KIT 50 / 90 BLACK/SS	195.00
GK90SB	STARTER KIT SRT 50/90 BLACK/SS	183.50
GKM200B	MODULE 26-46 BLACK STARTER- ELBOW	122.00
GKM200CB	MODULE 26-70KW BLACK STARTER-STRAIGHT	59.60
GKM90B	MODULE50/90 STARTER ELBOW BLACK	114.00
GKM90CB	MODULE 15-26 BLACK STARTER-STRAIGHT	52.80
GTH200B	H/L TERMINAL ELB 200 BLACK	93.00
GTH90B	H/L TERMINAL ELB 90 BLACK	83.80
GTL200B	STRAIGHT TERMINAL 26-46 BLACK	54.20
GTL90B	STRAIGHT TERMINAL 15-26 BLACK	48.30
GTV200B	VERT TERMINAL 90/200 BLACK	70.10
GTV90B	VERT TERMINAL 50/90 BLACK	64.20
GWB200B	WALL BRKT 90/200 BLACK	18.06
GWB90B	WALL BRKT 50/90 BLACK	16.60
GX150/200B	EXT150MM 90/200 BLACK	46.80
GX150/90B	EXT150MM 50/90 BLACK	44.50
GX250/200B	EXT250MM 90/200 BLACK	51.30
GX250/90B	EXT250MM 50/90 BLACK	49.00
GX450/200B	EXT450MM 90/200 BLACK	62.70
GX450/90B	EXT450MM 50/90 BLACK	58.20
GX950/200B	EXT950MM 90/200 BLACK	86.00
GX950/90B	EXT950MM 50/90 BLACK	79.30
GXA250/200B	ADJ EXT195-270 90/200 BLACK	81.50
GXA250/90B	ADJ EXT 195-270MM 50/90 BLACK	76.20

MAGNETIC CENTRL HEATING FILTER

Code	Description	Price (£)
VM01	Vortex Magone 22/28mm Magnetic Centrl Heating Filter - (Vm01)	102.70

GREEN SYSTEM VERTICAL TERMINAL EXTENSIONS

Code	Description	Price (£)
VTTEXT200	Extended Vertical Terminal 100 - (Vttext200)	86.00
VTTEXT90	Extended Vert Terminal 80 - (Vttext90)	78.50

RED SYSTEM FLEXI VERTICAL BALANCED FLUES

Code	Description	Price (£)
GFXBF10/26COMR	Red System Ss 10mtr Liner&Connec Pack 26kw	941.00
GFXBF12/26COMR	Red System Ss 12mtr Liner&Connec Pack 26kw	1,053.00
GFXBF6/26COMR	Red System Ss 6 Mtr Liner& Connec Pack 26kw	721.00
GFXBF8/26COMR	Red System Ss 8 Mtr Liner& Connec Pack 26kw	832.00

BOILER ACCESSORIES

Code	Description	Price (£)
SEALED SYSTEM KITS		
VTXOMSSKIT21	Vortex Pro External Sealed System Kit 15-21kW	368.00
VTXOMSSKIT26	Vortex Pro External Sealed System Kit 15-26kW	368.00
VTXOMSSKIT46	Vortex Pro External Sealed System Kit 26-46kW	417.00
PROGRAMMERS		
MTKIT	24 hour, single channel mechanical timer kit for combi	45.20
GES264	Sequence Controller 264	715.00

GRANT PLUME DIVERTER EZ-FIT FLUE ACCESSORY KITS

Code	Description	Price (£)
PLUME DIVERTERS SUITABLE FOR EZ-FIT YELLOW LEVEL FLUES BLACK FINISH		
GPDA90B	Adjustable plume diverter kit 80mm x 2 metres 12-26kW Black	190.70
GPDA200B	Adjustable plume diverter kit 80mm x 2 metres 26-70kW Black	208.00
GPD250EXT/90B	250mm extension 12-26kW Black	19.53
GPD250EXT/200B	Plume diverter kit 250mm extension 26-70kW Black	20.37
GPD500EXT/90B	Plume diverter kit 500mm extension 12-26kW Black	24.15
GPDA45/90B	Plume diverter kit 45° elbow 12-26kW Black	40.70
GPDBRKT90B	Plume diverter kit wall bracket 12-26kW Black	15.10
GPD500EXT/200B	Plume diverter kit 500mm extension 26-70kW Black	25.60
GPD1000EXT/90B	Plume diverter kit 1000mm extension 12-26kW Black	32.40
GPD1000EXT/200B	Plume diverter kit 1000mm extension 26-70kW Black	36.10
GPDA45/200B	Plume diverter kit 45° elbow 26-70kW Black	48.30
GPDBRKT200B	Plume diverter kit wall bracket 26-70kW Black	18.90

WHITE SYSTEM FLUE KITS

Code	Description	Price (£)
HIGH LEVEL /VERT BALANCED EZ-FIT STAINLESS STEEL ALL VORTEX INTERNAL MODELS		
HLK015090	White System 1.2 metre high level adjustable flue kit c/w 90° elbow and terminal 12-26kW	335.00
HLK0290200	White System 1.2 metre high level adjustable flue kit c/w 90° elbow and terminal 26-70kW	358.00
VTK055090	White System Adjustable vertical 3 metre flue kit c/w terminal and storm collar 12-26kW	410.00
VTK0690200	White System Adjustable vertical 3 metre flue kit c/w terminal and storm collar 26-70kW	449.00
EXTK31225/90	White System Extension 225mm 12-26kW	55.00
EXTK32225/200	White System Extension 225mm 26-70kW	61.10
EXTK09450/90	White System Extension 450mm 12-26kW	61.10
EXTK10450/200	White System Extension 450mm 26-70kW	77.00
EXTK11950/90	White System Extension 950mm 12-26kW	89.00
EXTK12950/200	White System Extension 950mm 26-70kW	103.30
EXTK13ADJ90	White System Adjustable extension 275-450mm 12-26kW	99.60
EXTK14ADJ200	White System Adjustable extension 275-450mm 26-70kW	111.80
ELBK2145/90	White System 45° elbow 12-26kW	65.60
ELBK2245/200	White System 45° elbow 26-70kW	78.40
VTMF90/200	White System Pitched master flashing (aluminium) 12-70kW	61.10
VTK25P90	White System Pitched flashing (lead) 12-26kW	70.10
VTK26P240	White System Pitched flashing (lead) 26-70kW	73.30
VTK27F90	White System Flat flashing 12-26kW	44.50
VTK28F200	White System Flat flashing 26-70kW	55.90
VTK26P200/X	White System Pitched roof flashing (lead replacement) 26-70Kw (including collar)	98.00
BRK2990	White System Adjustable wall bracket 12-26kW	21.84
BRK30200	Grant White System Adjustable wall bracket 26-70kW	21.84

YELLOW SYSTEM FLUE KITS

Code	Description	Price (£)
LOW LEVEL BALANCED EZ-FIT STAINLESS STEEL FOR ALL VORTEX INTERNAL MODELS		
EZ90B	Standard flue kit 12-26kW (includes s/s terminal guard in black)	202.00
EZ90SB	Short flue kit 12-26kW (includes s/s terminal guard)	193.00
EZ200B	Standard flue kit 26-70kW (includes s/s terminal guard)	237.00
EZ200SB	Short flue kit 26-70kW (includes s/s terminal guard)	219.00
X90S	Extension 225mm 12-26kW	47.60
X90M	Extension 450mm 12-26kW	58.20
X90L	Extension 450mm 12-26kW	69.40
EZELB90	90° elbow kit 12-26kW (includes elbow and 225mm extension)	120.70
EZ45/90	45° elbow kit 12-26kW (includes elbow and 225mm extension)	90.30
EZ45/90S	Short elbow only 12-26kW	69.40
EZELB200	90° elbow kit 26-70kW (includes elbow and 225mm extension)	120.70
EZ45/200	45° elbow kit 26-70kW (includes elbow and 225mm extension)	120.70
EZ45/200S	Short elbow only 26-70kW	90.30
X200S	Extension 225mm 26-70kW	58.20
X200M	Extension 450mm 26-70kW	69.40
X200L	Extension 450mm 26-70kW	81.50

ORANGE SYSTEM FLUE KITS

Code	Description	Price (£)
GFKIT6/100	Orange System Flexi kit 100mm dia x 6 metre 12-46kW	378.00
GFKIT8/100	Orange System Flexi kit 100mm dia x 8 metre 12-46kW	499.00
GFKIT10/100	Orange System Flexi kit 100mm dia x 10 metre 12-46kW	588.00
GFKIT11/100	Orange System Flexi kit 100mm dia x 11 metre 12-46kW	632.00
GFKIT12/100	Orange System Flexi kit 100mm dia x 12 metre 12-46kW	666.00
GFKIT14/100	Orange System Flexi kit 100mm dia x 14 metre 12-46kW	732.00
GFKIT16/100	Orange System Flexi kit 100mm dia x 16 metre 12-46kW	795.00
WX150/100	Orange System Extension 150mm x 100mm dia 12-46kW	27.90
WX250/100	Orange System Extension 250mm x 100mm dia 12-46kW	30.90
WX450/100	Orange System Extension 450mm x 100mm dia 12-46kW	37.70
WX950/100	Orange System Extension 950mm x 100mm dia 12-46kW	51.30
WXA250/100	Orange System Adjustable extension 235-300mm x 100mm dia 12-46kW	47.60
WE45/100	Orange System 45° elbow x 100mm dia 12-46kW	42.30
GFKIT6/125	Orange System Flexi kit 125mm dia x 6 metre 46-70kW	429.00
GFKIT8/125	Orange System Flexi kit 125mm dia x 8 metre 46-70kW	510.00
GFKIT10/125	Orange System Flexi kit 125mm dia x 10 metre 46-70kW	601.00
GFKIT11/125	Orange System Flexi kit 125mm dia x 11 metre 46-70kW	643.00
GFKIT12/125	Orange System Flexi kit 125mm dia x 12 metre 46-70kW	686.00
GFKIT14/125	Orange System Flexi kit 125mm dia x 14 metre 46-70kW	770.00
GFKIT16/125	Orange System Flexi kit 125mm dia x 16 metre 46-70kW	841.00
WX150/125	Orange System Extension 150mm x 125mm dia 46-70kW	31.70
WX250/125	Orange System Extension 250mm x 125mm dia 46-70kW	36.10
WX450/125	Orange System Extension 450mm x 125mm dia 46-70kW	43.00
WX950/125	Orange System Extension 950mm x 125mm dia 46-70kW	56.70
WXA250/125	Orange System white adjustable extension 235mm - 300mm x 125mm diameter	52.10
WE45/125	Orange System 45° elbow x 125mm dia 46-70kW	44.50

Notes

- All prices subject to VAT
- Help Line 01380 736920
- www.grantuk.com

BOILERS

Code	Part No	Product	Flow Rate @35°C	Price (£)
K30c	355061	30kw Combi	12.4 Ltrs Per Min	1173.15
K35c	355049	35kw Combi	14.5 Ltrs Per Min	1279.17
K30s	355063	30kw System		1074.19
K45h	355123	45kw Heat Only		1975.00
K55h	355124	55kw Heat Only		2245.00
K45h	355125	45kw Heat Only ***Lpg*** Boiler		1975.00
K55h	355126	55kw Heat Only ***Lpg*** Boiler		2245.00



ACCESSORIES

Code	Part No	Product	Price (£)
Ksok	355005	Twin Combi/System Stand Off Kit	36.97
Kdc	355067	7 Day Plug In Electronic Timer	44.36
Ktfk	355006	Air Terminal Finishing Kit	22.11
Ksk	355007	Flue Sleeve Kit	23.54
Khrc	355008	Heat Room Controller	161.90
Khmsk	355009	Heat Modulating Sequencer Kit	816.36
Khtsk	355010	Heat Tank Sensor Kit	41.98
Khsik	355011	Heat Safety Interlock Kit	87.79
Khnsk	355012	Heat Room Sensor Kit	41.98
Ksf	355081	Keston System Filter	133.90
Ksf28	355082	Keston System Filter 28mm for K45h & K55h	179.29
355013	355013	Single Frame Inline Kit	209.96
355014	355014	Header Inline Kit Dn80 X 2	1842.65
355015	355015	Header Inline Kit Dn80 X 3	2402.12
355016	355016	Header Inline Kit Dn80 X 4	3786.59
355017	355017	Header Inline Kit Dn80 X 5	4280.59
355018	355018	Header Inline Kit Dn80 X 6	4836.36
355019	355019	Low Loss Header Dn80	327.29
355020	355020	Universal Sequencer	816.36



Notes

- E-mail: technical@keston.co.uk
- Boiler prices don't include flue.
- All price subject to VAT
- www.keston.co.uk

Code	Size	Joule Item No:	Description	Diameter	Height	Price (£)
INDIRECT VERTICAL						
J1125	125 Ltr	TCEMVI-0125LFB	125L indirect standard B	540	1030	509.78
J1150	150 Ltr	TCEMVI-0150LFB	150L indirect standard B	540	1190	512.15
J1170	170 Ltr	TCEMVI-0170LFB	170L indirect standard B	540	1310	533.49
J1200S	200 Ltr	TCEMVI-0200NFC	200L indirect short C	600	1150	569.08
J1200	200 Ltr	TCEMVI-0200LFC	200L indirect standard C	540	1490	569.08
J1250S	250 Ltr	TCEMVI-0250NFC	250L indirect short C	600	1400	628.35
J1250	250 Ltr	TCEMVI-0250LFC	250L indirect standard C	540	1815	628.35
J1300S	300 Ltr	TCEMVI-0300NFC	300L indirect standard C	600	1600	699.49
J1300	300 Ltr	TCEMVI-0300LFD	300L indirect tall D	540	2040	699.49
J1400	400 Ltr	TCEMVI-0400LFC	400L indirect standard C	710	1570	1189.01
J1500	500 Ltr	TCEMVI-0500LFC	500L indirect standard C	710	1900	1383.02

DIRECT VERTICAL						
JD90	90 Ltr	TCEMVD-0090LFC	90L direct standard C	500	925	426.90
JD125	125 Ltr	TCEMVD-0125LFC	125L direct standard C	540	1030	432.01
JD150	150 Ltr	TCEMVD-0150LFD	150L direct standard D	540	1190	446.68
JD170	170 Ltr	TCEMVD-0170LFD	170L direct standard D	540	1310	450.32
JD200S	200 Ltr	TCEMVD-0200NFD	200L direct short D	600	1150	500.94
JD200	200 Ltr	TCEMVD-0200LFD	200L direct standard D	540	1490	500.94
JD250S	250 Ltr	TCEMVD-0250NFD	250L direct short D	600	1400	556.85
JD250	250 Ltr	TCEMVD-0250LFD	250L direct standard D	540	1850	556.85
JD300	300 Ltr	TCEMVD-0300NFD	300L direct short D	600.00	1600	673.32
JD300	300 Ltr	TCEMVD-0300LFD	300L direct standard D	600.00	1980	673.32

INDIRECT HORIZONTAL						
J1H125	125 Ltr	TCIMHI-0125LFB	125L ind HOR standard B	540	1030	922.89
J1H150	150 Ltr	TCIMHI-0150LFB	150L ind HOR standard B	540	1140	931.23
J1H170	170 Ltr	TCIMHI-0170LFC	170L ind HOR standard C	540	1205	937.28
J1H200	200 Ltr	TCIMHI-0200NFC	200L ind HOR short C	600	1085	1052.50
J1H250	250 Ltr	TCIMHI-0250NFC	250L ind HOR short C	600	1335	1239.68
J1H300	300 Ltr	TCIMHI-0300NFC	300L ind HOR short C	600	1535	1284.27

DIRECT HORIZONTAL						
JDH170	170 Ltr	TCIMHD-0170LFD	170L dir HOR standard D	540	1205	863.95
JDH200	200 Ltr	TCIMHD-0200NFD	200L dir HOR short D	600	1085	1336.09

INDIRECT VERTICAL - SLIMLINE						
JIS100	100 Ltr	TCEMVS-0100SFC	100L indirect slim C	475	950	684.48
JIS125	125 Ltr	TCEMVS-0125SFC	125L indirect slim C	475	1085	692.52
JIS150	150 Ltr	TCEMVS-0150SFC	150L indirect slim C	475	1335	711.36
JIS170	170 Ltr	TCEMVS-0170SFC	170L indirect slim C	475	1535	723.22
JIS200	200 Ltr	TCEMVS-0200SFC	200L indirect slim C	475	1880	746.94

JOULE EVOLUTION RANGE WITH AIR BUBBLE

Code	Size	Joule Item No:	Description	Diameter	Height	Price (£)
DIRECT EVOLUTION						
JD125EVO	125 Ltr	(TCEMVB-0125LFC)	Joule 125ltr Direct	540	1005	740.18
JD150EVO	150 Ltr	(TCEMVB-0150LFC)	Joule 150ltr Direct	540	1196	768.45
JD170EVO	170 Ltr	(TCEMVB-0170LFC)	Joule 170ltr Direct	540	1285	782.90
JD200EVO	200 Ltr	(TCEMVB-0200LFC)	Joule 210ltr Direct	540	1530	806.57
INDIRECT EVOLUTION						
J1150EVO	150 Ltr	(TCEMVA-0150LFB)	Joule 150ltr Indirect	540	1196	781.51
J1170EVO	170 Ltr	(TCEMVA-0170LFB)	Joule 170ltr Indirect	540	1285	817.31
J1200EVO	200 Ltr	(TCEMVA-0200LFC)	Joule 200ltr Indirect	540	1530	845.27
J1250EVO	250 Ltr	(TCEMVA-0250LFC)	Joule 250ltr Indirect	540	1785	965.91
J1300EVO	300 Ltr	(TCEMVA-0300LFC)	Joule 300ltr Indirect	540	2060	1039.96

Notes

- All dimensions are in millimetres
- All prices subject to VAT
- Helpline Number 01513551094
- www.jouleuk.co.uk

Code	Size	Joule Item No:	Description	Diameter	Height	Price (£)
DIRECT VERTICAL - SLIMLINE						
JDS100	100 Ltr	TCEMVD-0100SFD	100L direct slim D	475	950	597.71
JDS125	125 Ltr	TCEMVD-0125SFD	125L direct slim D	475	1085	608.63
JDS150	150 Ltr	TCEMVD-0150SFD	150L direct slim D	475	1335	621.53
JDS170	170 Ltr	TCEMVD-0170SFD	170L direct slim D	475	1535	626.10
JDS200	200 Ltr	TCEMVD-0200SFD	200L direct slim D	475	1880	662.47

INDIRECT SOLAR TWIN						
JW1170	170 Ltr	TCEMVS-0170LFB	170L sol TWIN standard B	540	1310	821.82
JW1200	200 Ltr	TCEMVS-0200NFC	200L sol TWIN standard C	600	1150	892.74
JW1250	250 Ltr	TCEMVS-0250NFC	250L sol TWIN standard C	600	1400	907.15
JW1300	300 Ltr	TCEMVS-0300NFC	300L sol TWIN standard C	600	1600	945.10



TORNADO

Code	Size	Diameter	Height	Price (£)
INDIRECT VERTICAL				
TOI125	125ltr	510	1420	1172.85
TOI150	150ltr	510	1540	1206.45
TOI170	170ltr	510	1780	1260.00
TOI200	200ltr	554	1600	1308.30
TOI250	250ltr	554	1920	1376.55
TOI300	300ltr	554	2080	1444.80



TEMPEST

Code	Size	Diameter	Height	Price (£)
INDIRECT VERTICAL				
TI125	125 LTR	510	935	1025.85
TI150	150 LTR	510	1060	1058.40
TI170	170 LTR	510	1200	1118.25
TI200	200 LTR	580	1120	1163.40
TI250	250 LTR	580	1330	1239.00
TI300	300 LTR	580	1650	1296.75
TI400	400 LTR	710	1590	2216.55
TI500	500 LTR	710	1835	2365.65
INDIRECT HORIZONTAL				
TIH200	200 LTR	550	1120	1426.95
TIH250	250 LTR	550	1330	1577.10
TIH300	300 LTR	550	1650	1708.35
INDIRECT SLIMLINE				
TIS150	150 LTR	470	1200	1245.30
TIS170	170 LTR	470	1500	1305.15
TIS200	200 LTR	470	1800	1351.35
TIS250	200 LTR	510	1800	1444.80
INDIRECT PRE PLUMB DIRECT VERTICAL				
TIP200	200	554	1120	1955.24
TIP250	250	554	1330	2021.39
TIP300	300	554	1650	2087.54
INDIRECT HEATPUMP				
TMI150	150	510	1060	1363.90
TMI170	170	510	1200	1386.90
TMI200	200	580	1120	1409.90
TMI250	250	580	1330	1499.60
TMI300	300	580	1650	1552.50
INDIRECT SLIMLINE				
TSMI150	150	510	1060	1497.30
TSMI170	170	510	1200	1520.30
TSMI200	200	554	1120	1543.30
TSMI250	250	554	1330	1637.60
TSMI300	300	554	1650	1696.10
DIRECT VERTICAL				
TD90	90 LTR	510	750	962.85
TD125	125 LTR	510	935	992.25
TD150	150LTR	510	1060	1019.55
TD170	170 LTR	510	1200	1045.80
TD200	200 LTR	554	1120	1087.80
TD250	250 LTR	554	1330	1160.25
TD300	300 LTR	554	1650	1240.05
TD500	500 LTR	660	1835	2157.75
DIRECT HORIZONTAL				
TDH150	150	510	1060	1225.25
TDH170	170	510	1200	1256.96
TDH200	200	554	1120	1320.96
TDH250	250	554	1330	1462.02
TDH300	300	554	1650	1589.76

Notes

- Tempest has external expansion vessel
- Tornado has built in expansion vessel
- All dimension in millimetres
- All prices subject to VAT
- www.telford-group.com

COPPER CYLINDERS & FOAM LAGGING

TELFORD COPPER CYLINDERS

Code	Litres	Diameter	Height	Price (£)
STANDARD INDIRECT WITH TOP IMMERSION AND 5 X 1" CONNECTIONS				
6012I	95	300	1500	515.20
7212I	113	300	1800	643.00
3616I	95	400	900	403.40
3618I	117	450	900	403.40
4216I	113	400	1050	422.00
4218I	140	450	1050	485.90
4818I	161	450	1200	547.20
6018I	204	450	1500	732.10
STANDARD INDIRECT WITH TOP IMMERSION AND 5 X 1 1/4" CONNECTIONS				
4820I	195	500	1200	998.30
6020I	248	500	1500	1340.40
STANDARD DIRECT WITH TOP & BOTTOM IMMERSION AND 5 X 1" CONNECTIONS				
3618D	120	450	900	390.10
4216D	116	400	1050	404.70
4218D	144	450	1050	454.00
4818D	166	450	1200	511.20
6018D	210	450	1500	676.20
STANDARD INDIRECT COMBINATION COPPER CYLINDERS				
3618COMBI	85 / 20	450	900	633.60
4218COMBI	115 / 20	450	1075	692.20
4818COMBI	120 / 40	450	1200	772.00
Code	Litres	Size Imperial	Height	Price (£)
STANDARD DIRECT COMBINATION COPPER CYLINDERS				
4218DCOMBI	115 / 20	450	1075	593.70
4818DCOMBI	120 / 40	450	1200	650.90

CLIMAFLEX PIPE INSULATION

Code	Description	Price (£)
15C	15mm x 9mm x 2m (380m per box)	0.68
15CC	15mm x 9mm x 1m (190m per box)	0.68
22C	22mm x 9mm x 2m (250m per box)	0.88
22CC	22mm x 9mm x 1m (125m per box)	0.88
28CC	28mm x 9mm x 1m (95m per box)	1.20



Notes

- Please note that directs have 2 immersion heater bosses for use with economy seven
- All cylinders have secondary connections
- Any special size/type available to order
- All combi cylinder have one immersion boss
- All dimension in millimetre
- All prices subject to VAT
- www.Telford-group.com

NOTES

NOTES



L&M Heating Supplies Ltd

Northampton

Unit 2
Sanders Lodge Industrial Estate
Wellingborough Road
Rushden
Northamptonshire
NN10 6BQ

t. 01933 352910

f. 01933 352915

e. nhsales@lmheating.com

Enfield

103 Lockfield Avenue
Enfield
Middlesex
EN3 7PY

t. 020 8443 5111

f. 020 8443 5588

e. sales@lmheating.com

Helpline 020 8443 5111

sales@lmheating.com

www.lmheating.com

Shaping & Return Policy

Radiator Shaping Service (Enfield only)

Description	Price
Single Radiator for Angled Bay	£100.00 per angle
Single Radiator for Curved Bay	£30.00 per foot
Brackets Altered for Vertical Fixing	£150.00 per radiator
Return of Template / Dispute	£40.00

Strict Conditions Apply

- Any queries relating to template will be charged
- Radiators are repainted with primer only and not radiator paint
- Curving can cause creasing to top and bottom sections
- Manufacturers warranty is negated once radiator is altered
- Your template is final! No alterations or cancellations accepted
- Delivery will be approx 15 - 20 working days
- Template must be marked either to wall or skirting
- Only radiators supplied by us will be sent for bending
- Templates will only be collected when we are delivering
- Top grills cannot be angled or curved
- Only single radiators can be shaped
- Only paper templates will be accepted

**Please remember to put your name on the template,
the size of radiator and whether to wall or skirting!**

Re-handling Charges

Product	Re-handling Charge
Boilers	5%
Boiler Accessories	10%
Cylinders	5%
Radiators	10%
Ecotherm	30%
Eco Flat Radiators	20%
Cast Iron Radiators	20%
Classic Column Radiators	30%
Towel Rails	20%
Super LST and Eco LST Covers	30%

Notes

- Opened or resealed boxes strictly not accepted for return
- Perfect saleable goods only accepted for return
- Special orders - cancellations or returns not accepted
- All goods for return strictly at our discretion
- Items refused on delivery will incur re-handling at the above rates



L&M Heating Supplies Ltd

Northampton

Unit 2
Sanders Lodge Industrial Estate
Wellingborough Road
Rushden
Northamptonshire
NN10 6BQ

t. 01933 352910

f. 01933 352915

e. nhsales@lmheating.com

Enfield

103 Lockfield Avenue
Enfield
Middlesex
EN3 7PY

t. 020 8443 5111

f. 020 8443 5588

e. sales@lmheating.com

www.lmheating.com

